

Chapman
Cattle Company

80 FORAGE DEVELOPED 2 YEAR OLD BULL SALE

FEBRUARY 18, 2021 • STETTLE, AB • 2PM MST



BULL POWER SINCE 1950 • ANGUS & SIMMENTAL ANGUS

CHAPMAN CATTLE COMPANY FORAGE-DEVELOPED 2 YEAR OLD ANGUS BULL SALE 2021

February 18, 2021 | Stettler Auction Mart, Stettler, Alberta

TERMS AND CONDITIONS

sale professionals

Don Raffan, Auctioneer 250-558-6789
Joe Ferris, Ringman 250-558-8745
Gary Rairdan, Ringman 403-588-0913
Blake Chapman 403-741-5760

bids

Buyer may call or send their bids to any of the sale professionals listed above or directly to Chapman Cattle Company. Complete satisfaction is guaranteed for cattle purchased sight unseen as well as all bulls sold.

terms & conditions

All cattle sell under the standard terms and conditions of the Canadian Angus Association. Terms of the sale are cash, payable on Sale Day unless prior arrangements have been made with Chapman Cattle Company.

insurance

Ownership risk to purchaser commences when the Auctioneer's hammer falls. All cattle returning to Chapman Cattle Company must be insured. Although all precautions will be made for the well-being of your cattle until possession has transferred, Chapman Cattle Company will not be liable for any sickness, injury or death that causes loss of use of the specified cattle. A Livestock Insurance agent will be available Sale Day to discuss your coverage options.

announcements

All announcements from the sale block on sale day take precedence over any printed material.

food

Coffee and donuts in the a.m. Lunch will be provided and served starting at 12:00 p.m. Hospitality after the sale.

hotels

Canalta Hotel, Stettler 403-742-3371
Ramada Inn, Stettler 403-742-6555
Super 8 Motel, Stettler 403-742-3391
Heartlander Motel, Stettler 403-742-3401

liability

All persons who attend the sale do so at their own risk and the owners, management, and Sale Day staff assume no liability, and disclaims all liability, legal or otherwise, for any reason.

health

All sale bulls have been vaccinated twice with Vision 8 Somnus and Vista Once; bolstered with Express FP 5-VL5; treated with Ivermectin, Cydectin and SafeGuard; supplemented with MultiMin 90 and Vitamin A/D; and fertility tested by Dr. Jackie Dobinson.

storm date

FEB 19, 2021 | 1PM | Stettler Auction Mart

In the event of a weather event, updates will be posted at www.chapmancattle.com or call the Stettler Auction Mart 403-742-2368 or Silas Chapman 403-741-2099.

delivery

Upon Settlement, please choose one of the following options and inform the clerk at the time of settlement. Please leave detailed delivery instructions upon doing so.

A: **\$100 discount** per bull if bulls are picked up sale day.

B: **\$100 discount** per bull if bulls are picked up within a week of the sale.

C: **Complimentary Delivery**

Every attempt will be made to deliver your new bull(s) as close to your bull pen as possible for bulls selling within the prairie provinces and B.C. Any U.S. purchases will be delivered to Billings, MT. Delivery will commence in March. Chapman Cattle

Company assumes no liability of death or injury for bulls returning to the ranch or in transit on a private or commercial carrier.

sight unseen purchases

Can't make it to the sale? We guarantee you won't be disappointed in a Chapman "Forage-Developed" bull that you buy "sight unseen". In fact, we sell many bulls every year this way. Our experience over the past 70 years is the sooner you contact us, the better we are able to match the right cattle to your specifications. When cattle purchased sight-unseen are delivered, the buyer has the right of refusal for any animal that is not as they were represented. Guarantee applies only to cattle discussed with a Chapman Sale Professional prior to the sale.

guarantee

We're confident that our 'Forage-Developed' bulls will meet and exceed your standards for longevity and performance. If for any reasons you're not satisfied with a bull you purchase from us, you don't have to pay – just call us for a prompt and courteous credit or refund. Any claims are to be made by October 01, 2021.

follow up & consulting

We are interested about your program too, your success, and the effectiveness of our cattle in your herd. Feel free to contact us at any time.

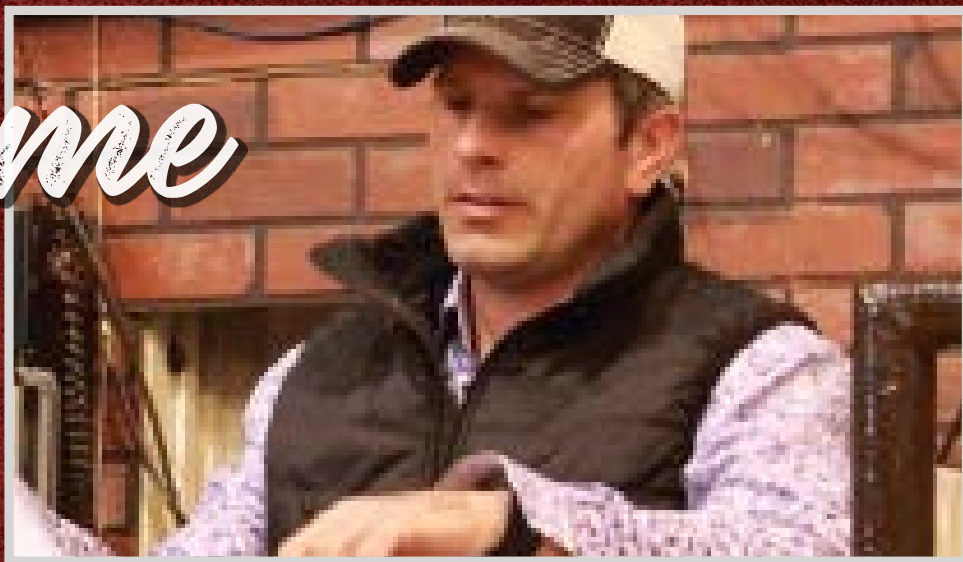
Call us at (403) 741-2099, email us at silas@chapmancattle.com or through our website at www.chapmancattle.com.

Complete Bull Information available online including catalog, video, individual performance, EPD's, sale weights and scrotal measurements at:
www.chapmancattle.com

Please let us know if we can provide you with any additional information or assistance. We look forward to seeing you on sale day!

Welcome

from
**CHAPMAN
CATTLE
COMPANY**



Internet Bidding Available

D | L | M | S
www.dlms.ca

**For more information call DLMS:
Mark Shologan 780.699.5082 or
DLMS Purebred Team 780.991.3025**

INSTRUCTIONS FOR VIEWING & BIDDING ONLINE

Visit www.dlms.ca Fill out the registration form located under registration and sign up for your free user account to select a user-name and password.

BIDDERS

To be approved as a bidder, log in and click BUYER APPROVAL tab, select the sale you are interested in bidding at and click sign up.

For more information or for help getting approved, call Whitney Bosovich (780.991.3025) or Mark Shologan (780-699-5082).

Welcome to our Annual Forage-Developed Bull Sale

and thank you for your interest and investment in the genetics we bring forward every year. Over the course of three generations and 71 years we have been developing and marketing 2-Year-Old bulls exclusively. Within that time our philosophy to breeding cattle really hasn't changed: avoid any shot-gun approach to genetic selection, avoid chasing fads, and remain steadfast in maternal genetic selection.

As cattle producers, we all have access to the same genetics annually. We have focused on stacking proven genetics that are like-in-type; while allowing the environment to sort through the genetic base we have, or have accessed, in order to determine the replacements we keep and the bulls we sell. This has resulted in a multi-generational product that breed true in both genotype and phenotype.

The phenotype of our cattle has moderated over the past two decades, and this is directly attributed to the cows matching the environmental pressure we place on them. However, the percent body weight weaned per cow is now higher. If we were a commercial cow/calf outfit we would have the ability to run more cows per acre with the option to initiate a terminal crossbreeding system to increase yield. The ideal cow size and weight has been highly debated; but as a whole the smaller cow should contribute more to your gross margin.

Within the footnotes in the catalog you will notice a lot of research on the cattle "behind the bull" with the intention of providing familiarity of bloodlines and the production and longevity of the maternal dams. We recommend that before you buy a bull anywhere, familiarize yourself with their cowherd, their breeding objectives, and their long-term philosophy. There is no way around it, your cowherd inherits its genes from where the herd sires are sourced from, and that can have a profound financial impact on your program for years.

With that, the sale offering represents a cross section of proven maternal genetics. All reference sires have daughters in or coming into production this year. Our bulls breed bigger than you'd think, with bulls from past sales having sired feeders that fit in grass-based branded beef programs; sired steers excelling in grain-fed carcass trials; sired division winners from 4-H to Agribition; and sale highs for us and fellow breeders alike. Most importantly, those bulls sired maternal function, with customers returning because those Chapman-sired cows "lasted a long time".

The bull offering is uniform and consistent – quality sells throughout, and now includes a selection of SimAngus bulls. We are confident in the genetic package we are selling on Thursday, February 18th and are available 365 days a year to assist you with your purchases. Thank you in advance for your interest and consideration.

Silas Chapman

Phone: (403) 741-2099

silas@chapmancattle.com

www.chapmancattle.com

SIRE

A

SITZ Payweight 749E

Tattoo: IMP 749E DOB: January 19 2017 REG#: 2070978

**SPRING '21**

BW	1.9
WW	50
YW	92
M	32
CE	4.0
MCE	9.0

BASIN PAYWEIGHT 006S
BASIN PAYWEIGHT 1682
 21AR O LASS 7017

CONNEALY THUNDER
SITZ FOREVER LADY 612T
 SITZ FOREVER LADY 63M

VERMILION PAYWEIGHT J847
 BASIN LUCY 3829 AMF NHF
 HARB PENDLETON 765 J H
 21AR O LASS F24A

BALDRIDGE KABOOM K243
 PARKA OF CONANGA 241
 TRAVELER 124 G D A R
 LUKENS FOREVER LADY J463

Progeny Birth Weight Averages: Male 86 lbs | Female 79lbs

In search of an outcross pedigree that offers a phenotype similar to ours, we chose 749 as one of the higher dollar bulls in the spring '18 Sitz Bull Sale. He posted a BW 87, WW 775, YW 1340, and YSC 40; and is a result of an embryo mating between the highly proven Basin Payweight 1682 and the Pathfinder donor Sitz Forever Lady 612T. She is also the mother behind Sitz Reload 411C. True to the 1682 downline, his progeny are wide-based, deep made cattle with a marketable phenotype.

**SITZ FOREVER LADY 612T**

GPP

LOT 1

LOT

1**CHAPMAN PAY DIRT 9820**

Tattoo: SWC 9820G DOB: April 25 2019 REG#: 2185407

SPRING '21

BW	3.1
WW	68
YW	108
M	25
CE	0.0
MCE	5.0

BASIN PAYWEIGHT 1682
SITZ PAYWEIGHT 749E
 SITZ FOREVER LADY 612T

SINCLAIR RITO 9R7
CHAPMAN HOLLY 1047Y
 DDA HOLLY 239

BASIN PAYWEIGHT 006S
 21AR O LASS 7017
 CONNEALY THUNDER
 SITZ FOREVER LADY 63M

RITO REVOLVE OR5
 SINCLAIR K BTY 6PV5 25F3
 O C C EMBLAZON 854E
 DDA HOLLY 084

DAM'S PROD

BW	WW	205	WR	YR	AOD	NR
96	795	782	122	116	8	110

Herd bull candidate who has excelled in every category. Projected to be the heaviest Angus bull sale day, Lot 01 carries forward the Payweight depth of body, the added Rito performance, and the Emblazon doability. His dam is built to last and following in the footsteps of her donor dam who is still active at age 19 and earned a NR 13/104. Same cow family as the good Lot 14 bull.



LOT	2	CHAPMAN PAY DIRT 9843				
		Tattoo: SWC 9843G DOB: April 29 2019 REG#: 2185403				
SPRING '21						
BW	2.6	BASIN PAYWEIGHT 1682		BASIN PAYWEIGHT 006S		
WW	56	SITZ PAYWEIGHT 749E		21AR O LASS 7017		
YW	96	SITZ FOREVER LADY 612T		CONNELLY THUNDER		
M	29	CHAPMAN NPV 299W		SITZ FOREVER LADY 63M		
CE	1.0	CHAPMAN KIWI ROSE 132Y		SINCLAIR NET PRESENT VALUE		
MCE	7.0	CHAPMAN KIWI 936W		CROWFOOT PATTIE QUEEN 4584P		
				SHALOM WAIGROUP 519/94		
				CHAPMAN ROSE 318N		
DAM'S PROD						
BW	WW	205	WR	YR	AOD	NR
95	710	710	111	108	8	112

Herd bull candidate who emulates Lot 01 closely in terms of type and individual performance. We have only ever sold 2 yearling heifers off the top end, and Lot 02's dam produced one of them. She maintains a CI 361d and holds a NR 8/112. Her paternal granddam 4584P is an embryo donor, still active at 17, has earned a NR 12@109, with 9 sons sold through this sale.



LOT	3	CHAPMAN PAY DIRT 9819				
		Tattoo: SWC 9819G DOB: April 25 2019 REG#: 2185388				
SPRING '21						
BW	21	BASIN PAYWEIGHT 1682		BASIN PAYWEIGHT 006S		
WW	40	SITZ PAYWEIGHT 749E		21AR O LASS 7017		
YW	82	SITZ FOREVER LADY 612T		CONNEALY THUNDER		
M	28	COLEMAN MISSING LINK 9267		SITZ FOREVER LADY 63M		
CE	3.0	CHAPMAN PRISCILLA 2026Z		O C C MISSING LINK 830M		
MCE	6.0	RED CHAPMAN PRISCILLA 0118X		BOHI PURE PRIDE 6096		
				RED CROWFOOT COWBOY 7206T		
				RED CROWFOOT GREEN 1015L		
		DAM'S PROD				
BW	WW	205	WR	YR	AOD	NR
90	640	630	99	99	7	99

Lot 03 will be one of the heaviest bulls by sale day and achieved this accelerated gain over the summer and fall on pasture. His dam is the right kind of cow and maintains a CI of 364d who is bred back early to Titanium. Looking at our cowherd data, the statistical distribution of cows that have the most longevity (outliers aside) maintain nursing ratios between 98-104.



LOT	4	CHAPMAN PAY DIRT 9902				
		Tattoo: SWC 9902G DOB: May 14 2019 REG#: 2185395				
SPRING '21						
BW	13	BASIN PAYWEIGHT 1682		BASIN PAYWEIGHT 006S		
WW	42	SITZ PAYWEIGHT 749E		21AR O LASS 7017		
YW	76	SITZ FOREVER LADY 612T		CONNEALY THUNDER		
M	28	SINCLAIR IN TIME 9RT10		SITZ FOREVER LADY 63M		
CE	3.0	CHAPMAN PEARL 1063Y		LEACHMAN RIGHT TIME		
MCE	8.0	CHAPMAN PEARL 8002U		N BAR ENCHANTRESS 4908		
				CROWFOOT JOKER 6172S		
				CROWFOOT PEARL 1828L		
				DAM'S PROD		
BW	WW	205	WR	YR	AOD	NR
88	640	684	107	105	8	111

These Payweights exhibit a body type we desire for a low input system and will be fresh genetics for many. The maternal side of Lot 04's pedigree reads "cowmaker" with Right Time and Joker. His dam has already raised 2 sale-qualified bulls, this is her 3rd with a full brother slated for 2022 while posting a 396d CI. Her granddam achieved Association Elite status, earning a NR 8/107.

LOT

Tattoo: SWC 9986G DOB: MAY 01 2019 REG#: PENDING

SPRING '21		BASIN PAYWEIGHT 1682		BASIN PAYWEIGHT 006S	
BW	1.6	SITZ PAYWEIGHT 749E	21AR O LASS 7017	CONNEALLY THUNDER	
WW	40	SITZ FOREVER LADY 612T	SITZ FOREVER LADY 63M		
YW	68		COLE CREEK GOLDMERE 70V		
M	26	COLE CREEK GOLDMERE 581	COLE CREEK JUANADA 92T		
CE	5.5	CHAPMAN LANA 3109A	CROWFOOT JOKER 6172S		
MCE	9.5	CHAPMAN LANA 1042Y	DDA LANA 317		
DAM'S PROD					
BW	WW	205	WR	YR	ADD NR
86	670	676	106	112	6 102

Lot 05 has balanced EPD's below breed average for CE and MCE and is a bull I would consider for heifers or cows. His Montana-bred pedigree combines some proven genetics from Sitz, Cole Creek, Diamond D and the original Walling herd. Dam holds a 366d CI. The paternal granddam, 612T, is a Pathfinder in the American herdbook ("Elite" in Canada) recognizing cow productivity.



LOT

Tattoo: SWC 9792G DOB: April 21 2019 REG#: 2185411

SPRING '21		BASIL		DAM'S PROD		
BW	0.9	BASIN PAYWEIGHT 1682	BASIN PAYWEIGHT 006S			
WW	41	SITZ PAYWEIGHT 749E	21AR O LASS 7017			
YW	70	SITZ FOREVER LADY 612T	CONNEALY THUNDER			
M	27		SITZ FOREVER LADY 63M			
CE	5.0	CHAPMAN MEMENTO 0505X	SINCLAIR MEMENTO 8RL5			
MCE	8.0	CHAPMAN BLOSSOM 3071A	CROWFOOT REV ERICA 5752R			
		CHAPMAN BLOSSOM 815U	SINCLAIR RITO LEGACY 3R9			
			BAR J P BLOSSOM 62K			
BW	WW	205	WR	YR	ADD	NR
85	605	586	92	94	6	100

Calving ease Payweight for heifers. Lot 06 has the right lineage to transition a herd towards less input costs with Payweight, Memento and Rito Legacy: all sires up close in his pedigree that have more depth of body, responsible frame, low dry matter intake requirements and positive backfat. His dam is a 1300+ lb cow tracing back to the Happyvale donor Penosky Blossom 28U.

LOT

Tattoo: SWC 9816G DOB: April 24 2019 REG#: 2185417

SPRING '21		BASILIN PAYWEIGHT 1682		BASILIN PAYWEIGHT 006S	
BW	11	SITZ PAYWEIGHT 749E		21AR O LASS 7017	
WW	54	SITZ FOREVER LADY 612T		CONNEALY THUNDER	
YW	89			SITZ FOREVER LADY 63M	
M	28	MC CUMBER 536P EXT 7196		SITZ JLS EMULATION EXT 536P	
CE	5.0	CHAPMAN EILEEN 3027A		LASSIE 434 OF MC CUMBER	
MCE	9.0	CHAPMAN EILEEN 017X		CROWFOOT EQUATION 5793R	
				CHAPMAN EILEEN 636S	
DAM'S PROD					
BW	WW	205	WR	YR	ADD
82	690	676	106	104	6
					101

Calving ease Payweight that will get noticed sale day. He tabulates a solid record for individual performance and his EPD's indicate below breed average for calving ease and above breed average for growth. His mother holds a 367d CI. She traces to the Eileen 216M donor who is an Elite dam with the association NR 13/104. Udder-fixing pedigree full of fertility & longevity.



LOT

Tattoo: SWC 9911G DOB: May 18 2019 REG#: 2185406

SPRING '21		BRAIN		BRAIN		DAM'S PROD	
BW	2.7	212R O LASS 7017	212R O LASS 7017	212R O LASS 7017	212R O LASS 7017	212R O LASS 7017	212R O LASS 7017
WW	49	SITZ FOREVER LADY 612T	SITZ FOREVER LADY 612T	SITZ FOREVER LADY 612T	SITZ FOREVER LADY 612T	SITZ FOREVER LADY 612T	SITZ FOREVER LADY 612T
YW	86	XO CROWFOOT JOKER 8814U	XO CROWFOOT JOKER 8814U	XO CROWFOOT JOKER 8814U	XO CROWFOOT JOKER 8814U	XO CROWFOOT JOKER 8814U	XO CROWFOOT JOKER 8814U
M	25	CROWFOOT TRADER 1086Y	CROWFOOT TRADER 1086Y	CROWFOOT TRADER 1086Y	CROWFOOT TRADER 1086Y	CROWFOOT TRADER 1086Y	CROWFOOT TRADER 1086Y
CE	0.0	CROWFOOT TRADER 6104S	CROWFOOT TRADER 6104S	CROWFOOT TRADER 6104S	CROWFOOT TRADER 6104S	CROWFOOT TRADER 6104S	CROWFOOT TRADER 6104S
MCE	2.0						

Lot 08 is above average in all categories and built to breed a lot of cows for a lot of years. His dam was sourced out of the Crowfoot Dispersal and this is her 4th sale-qualified bull with another 2 daughters retained. She is a cow with a bit more power and is bred back to Robust. The sire of Lot 04 has averaged 86 lbs and 79 lbs on his male and female progeny.

SIRE

B

MC CUMBER 307 *Fortunate* 7141

Tattoo: IMP 7141E DOB: January 31 2017 REG#: 2070977



SPRING '21

BW 16
WW 50
YW 93
M 20
CE 8.0
MCE 5.0

SINCLAIR FORTUNATE SON
MC CUMBER FORTUNATE 307
MISS WIX 9122 OF MC CUMBER

O C C TREMENDOUS 619T
B PRIDE 2143 OF MC CUMBER
B PRIDE 0135 OF MC CUMBER

SINCLAIR EMULATE 7XT28
SINCLAIR BLACKBIRD 2P8 7079
SINCLAIR EXTRA 4X13
MISS WIX 7126 OF MC CUMBER

O C C EMBLAZON 854E
O C C DIXIE ERICA 960H
MC CUMBER 4X13 EXTRA 829
B PRIDE 626 OF MC CUMBER

Progeny Birth Weight Averages: Male 84 lbs | Female 79lbs

7141 was our pick and 3rd high selling bull out of the 2018 McCumber Angus Bull Sale. Statistically he is balanced with a BW 82, 205 754, WR 104, YW 1466, YR 111, YSC 38. More importantly, everything about 7141 indicates a cow maker. He is triple bred Sinclair Extra 4X13 and out of an outstanding OCC Tremendous 619T dam. He is a long-spined bull, highly fertile covering 80 1st calvers this year and is structurally hard to fault. His 1st daughters look great.



LOT

9

CHAPMAN EMULATE 9861

Tattoo: SWC 9861G DOB: May 04 2019 REG#: 2185373

SPRING '21

BW 18
WW 56
YW 96
M 19
CE 5.0
MCE 4.0

MC CUMBER FORTUNATE 307
MC CUMBER 307 FORTUNATE 7141
B PRIDE 2143 OF MC CUMBER

SINCLAIR RITO 9R7
CHAPMAN CHLOE 2062Z
CHAPMAN CHLOE 8017U

SINCLAIR FORTUNATE SON
MISS WIX 9122 OF MC CUMBER
O C C TREMENDOUS 619T
B PRIDE 0135 OF MC CUMBER

RITO REVOLVE 0R5
SINCLAIR K BTY 6PV5 25F3
CROWFOOT MACHO 4549P
CHAPMAN CHLOE 617S

DAM'S PROD

BW	WW	205	WR	YR	AOD	NR
92	675	690	108	106	7	100

Herd bull with added length of spine that easily correlates with being one of the heaviest bulls in the pen. His sire is leaving some excellent replacement females, and Lot 09 should follow suit as he stems from the Chloe cow family. His dam posts a 368d CI and after her, 5 consecutive Chloe's have averaged 11 calves. Pedigree combines the 3 pillars Rito-Emulation-Traveler.



LOT

10

CHAPMAN EMULATE 9833

Tattoo: SWC 9833G DOB: April 28 2019 REG#: 2185370

SPRING '21

BW 19
WW 48
YW 88
M 24
CE 3.0
MCE 6.0

MC CUMBER FORTUNATE 307
MC CUMBER 307 FORTUNATE 7141
B PRIDE 2143 OF MC CUMBER

SINCLAIR IN TIME 9RT10
CHAPMAN PEARL 1024Y
CHAPMAN PEARL 8061U

SINCLAIR FORTUNATE SON
MISS WIX 9122 OF MC CUMBER
O C C TREMENDOUS 619T
B PRIDE 0135 OF MC CUMBER

LEACHMAN RIGHT TIME
N BAR ENCHANTRESS 4908
CROWFOOT EQUATION 5793R
CHAPMAN PEARL 4404

DAM'S PROD

BW	WW	205	WR	YR	AOD	NR
88	710	707	111	108	8	107

Very similar bull to Lot 09 for individual performance and the EPD calculation. Lot 10 is also full of maternal merit. He combines two of the most prolific cow families from McCumber Angus, along with the N Bar Enchantress 4908 donor. His dam is maternally bred too and posts a 367d CI, while her dam achieved Elite status posting a NR 8/107 and her dam earned a NR 9/101.



LOT	11	CHAPMAN EMULATE 9835
		Tattoo: SWC 9835G DOB: April 28 2019 REG#: 2185412
SPRING '21		
BW	1.8	MC CUMBER FORTUNATE 307 MC CUMBER 307 FORTUNATE 7141 B PRIDE 2143 OF MC CUMBER
WW	53	
YW	89	
M	23	CHAPMAN LEGACY 026S CHAPMAN BLACKBIRD 138Y CHAPMAN BLACKBIRD 820U
CE	4.0	
MCE	4.0	
		DAM'S PROD
BW	WW	205 WR YR AOD NR
88	775	772 121 115 8 106

Lot 11 hit the mark in every measurable trait. He weaned off as one of the heaviest bulls and will be one of the heavier bulls sale day. What is neat is the high percentage weaned of her own body weight that his smaller-framed dam achieved, while holding a 359d CI and a NR 7/106. It's no surprise though as she is a Legacy daughter known for their fertility, longevity and productivity.

EPD EXPLANATION

EPD's are predictions on how each bull rates against his own contemporary group and the rest of the breed. EPD's evaluate group averages and offspring's performance, however they cannot predict individual performance or weights.

For example, if Bull A (WW EPD of +10) & Bull B (WW of +60) were randomly mated with 10 similar cows, we would expect the group avg. weaning weight of Bull A's offspring to be 50 lbs. lighter than Bull B's (60 - 10 = 50).

BW	Birth Weight - expressed in pounds, is a prediction of a sire's ability to transmit birth weight to his progeny
WW	Weaning Weight - expressed in pounds, is a predictor of a sire's ability to transmit weaning growth to his progeny
YW	Yearling Weight - expressed in pounds, is a predictor of a sire's ability to transmit yearling growth to his progeny.
Milk	A predictor of a sire's genetic merit for milk and mothering ability as expressed in his daughters
CE	Calving Ease Direct (CE), is expressed as a difference in percentage of unassisted births, with a higher value indicating greater calving ease in first-calf heifers. It predicts the average difference in ease with which a sire's calves will be born when he is bred to first-calf heifers.
MCE	Maternal Calving Ease (MCE) is expressed as a difference in percentage of unassisted births with a higher value indicating greater calving ease in first-calf daughters. It predicts the average ease with which a sire's daughters will calve as first-calf heifers when compared to daughters of other sires.

LOT	12	CHAPMAN EMULATE 9791
		Tattoo: SWC 9791G DOB: April 21 2019 REG#: 2185414
SPRING '21		
BW	1.4	MC CUMBER FORTUNATE 307 MC CUMBER 307 FORTUNATE 7141 B PRIDE 2143 OF MC CUMBER
WW	42	
YW	72	
M	20	MC CUMBER 536P EXT 7196 CHAPMAN PRIDE 3052A CHAPMAN PRIDE 0120X
CE	5.0	
MCE	6.0	
		DAM'S PROD
BW	WW	205 WR YR AOD NR
84	615	595 93 95 6 100

Calving ease prospect that will be in the mix for sale day weight. His Emulation-bred pedigree should be ideal for heifers for these reasons 1) low birth weight 2) high fertility 3) heightened newborn calf vigor 4) correct calving ease phenotype. His dam holds a 366d CI and the next 5 cows behind her have earned NR 8/101, 10/105, 8/105, 111/109 and 10/106 respectively.

BREED AVERAGES

Black Angus Breed Averages are compiled from the total number of Black Angus calves registered in 2019 to compare the BLACK ANGUS BULLS in this catalogue to:

	BLACK ANGUS
BW	+2.1
WW	+48
YW	+86
M	+22
CE	+3.4
MCE	+7

SIRE

C

CHAPMAN *King Ten* 4522B

Tattoo: SWC 4522B DOB: April 10 2014 REG#: 1830953



SPRING '21

BW 24
WW 41
YW 75
M 20
CE 4.0
MCE 2.0

CROWFOOT EQUATION 5793R
CROWFOOT 9052W
CROWFOOT KELTON 4790P

J R SHARPSHOOTER
C H BLACKBIRD 9717
C H BLACKBIRD 6604

O C C LEGACY 839L
CROWFOOT FORKS 755K
O C C HONESTY 962H
Z O E KELTON 9978

HIGH VALLEY 4C6 AMBUSH
JOLLY R ENVIOUS 144E
CONCAR CORNHUSKER 0019
C H BLACKBIRD 8006

Progeny Birth Weight Averages: Male 85 lbs | Female 76 lbs

We retained five bulls out of the 2014 calf crop. Those five were all out of what we considered paternally prepotent dams that were proven and donor worthy. 4547B was one of those five and out of the 5900R donor who earned a NR 12/103 who also produced the Memento 0511X herd sire. Interesting that 4547 is a naturally sired son of Crowfoot Equation 5793R who ran here with 50 cows as a 9-year-old bull. The first Crowfoot Equation daughters are now entering their 14th year and easily make an argument to going back to using the old bull, or his downline.



LOT

13

CHAPMAN KING TEN 9809

Tattoo: SWC 9809G DOB: April 25 2019 REG#: 2185429

SPRING '21

BW 1.8
WW 48
YW 83
M 20
CE 3.3
MCE 0.8

CROWFOOT 9052W
CHAPMAN KING TEN 4522B
C H BLACKBIRD 9717

SINCLAIR BROKER 3RC33
CHAPMAN ROSE 7017E
CHAPMAN ROSE 5056C

CROWFOOT EQUATION 5793R
CROWFOOT KELTON 4790P
J R SHARPSHOOTER
C H BLACKBIRD 6604

SINCLAIR ENTREPRENEUR 8R101
SINCLAIR LADY IDA 8XV12 C52
SINCLAIR RITO 9R7
CHAPMAN ROSE 8057U

DAM'S PROD

BW	WW	205	WR	YR	AOD	NR
87	760	821	129	121	2	129

By design, Lot 13 has achieved in every measurable trait and will do so right up to sale day where he is projected to be one of the biggest bulls. His young dam is off to a great start and bred A.I. early to hold a 363d CI on two calves. Her dam (NR 3/110) also has a son in the sale in Lot 72, while her granddam (NR 10/110) has achieved Elite status and has the Lot 52 in this sale as well.



LOT

14

CHAPMAN KING TEN 9793

Tattoo: SWC 9793G DOB: April 21 2019 REG#: 2185447

SPRING '21

BW 21
WW 46
YW 75
M 19
CE 3.5
MCE 3.0

CROWFOOT 9052W
CHAPMAN KING TEN 4522B
C H BLACKBIRD 9717

MC CUMBER 8R101 RITO 161
CHAPMAN HOLLY 7209E
CHAPMAN HOLLY 1047Y

CROWFOOT EQUATION 5793R
CROWFOOT KELTON 4790P
J R SHARPSHOOTER
C H BLACKBIRD 6604

SINCLAIR ENTREPRENEUR 8R101
B PRIDE 463 OF MC CUMBER
SINCLAIR RITO 9R7
DDA HOLLY 239

DAM'S PROD

BW	WW	205	WR	YR	AOD	NR
87	670	722	113	110	2	113

Another King Ten son with solid numbers across the board. Same cow family as Lot 01. There are 3 donor cows in his immediate pedigree. His paternal granddam, 9717, has a NR 14/101 and is also the granddam of Lots 28-31. His maternal great granddam, 239M, has a NR 13/108. His young dam is also off to a great start with a 372d CI on two calves and bred back early A.I.



LOT 15

LOT	15	CHAPMAN KING TEN 9775						
		Tattoo: SWC 9775G DOB: April 18 2019 REG#: 2185435						
		SPRING '21						
		BW	2.0	CROWFOOT 9052W	CROWFOOT EQUATION 5793R			
		WW	45	CHAPMAN KING TEN 4522B	CROWFOOT KELTON 4790P			
		YW	77	C H BLACKBIRD 9717	J R SHARPSHOOTER			
		M	23		C H BLACKBIRD 6604			
		CE	4.3	CHAPMAN MEMENTO 3589A	CHAPMAN MEMENTO 0505X			
		MCE	3.3	CHAPMAN LURA 708IE	CHAPMAN KAWICH LADY 8065U			
				CHAPMAN LURA 2019Z	MC CUMBER 536P EXT 7196			
					CHAPMAN LURA 9073W			
					DAM'S PROD			
		BW	WW	205	WR	YR	AOD	NR
		88	700	743	116	112	2	116

Same notes on this good bull as Lots 13-14. The Lura cows are all productive and Lot 15's young dam is following suit. She raised this good bull, bred back early to Steadfast, holds a 388d CI and caught early A.I. service this year. Her dam has a NR 6/103. Memento 3589A has left some very good daughters. His dam and granddam hold a NR of 10/110 and 13/105 respectively.

LOT	16	CHAPMAN KING TEN 9897					
		Tattoo: SWC 9897G DOB: May 13 2019 REG#: 2185441					
		SPRING '21		CROWFOOT 9052W		CROWFOOT EQUATION 5793R	
		BW 26		CHAPMAN KING TEN 4522B		CROWFOOT KELTON 4790P	
		WW 46		C H BLACKBIRD 9717		J R SHARPSHOOTER	
		YW 83		CHAPMAN MEMENTO 3589A		C H BLACKBIRD 6604	
		M 24		CHAPMAN K PRIDE 7150E		CHAPMAN MEMENTO 0505X	
		CE 4.0		CHAPMAN K PRIDE 2091Z		CHAPMAN KAWICH LADY 8065U	
		MCE 2.8				SINCLAIR RITO 9R7	
						CHAPMAN K PRIDE 8067U	
				DAM'S PROD			
		BW		WW		205	
		WR		YR		AOD	
		NR					
		89		670		787	
				123		117	
		2		123			

Lots of performance in this bull. What a way to create uniformity than to grab a hold of this sire group all out of 1st calf heifers. Our bulls are built upon stacking proven pedigrees and then developing them responsibly. His dam holds a 358d CI, bred back A.I., and stems from a long line of K Prides, with the 1st 5 Prides earning a NR 5/106, 10/109 (Elite), 8/105, 11/105, 10/106.



OCC LEGACY 839L

LOT	17	CHAPMAN KING TEN 9757				
		Tattoo: SWC 9757G DOB: April 09 2019 REG#: 2185425				
SPRING '21		CROWFOOT 9052W CHAPMAN KING TEN 4522B C H BLACKBIRD 9717		CROWFOOT EQUATION 5793R CROWFOOT KELTON 4790P J R SHARPSHOOTER C H BLACKBIRD 6604		
BW	27	RICHMOND BANDIT SRD 67B CHAPMAN ROSE 7009E CHAPMAN ROSE 911W		COLE CREEK GOLDMERE 581 CROWFOOT KELTON 2015Z S B R WATERTON 6148S CHAPMAN ROSE 741T		
WW	43					
YW	74					
M	21					
CE	2.0					
MCE	4.0					
		DAM'S PROD				
BW	WW	205	WR	YR	AOD	NR
77	595	623	98	98	2	98

Calving ease prospect out of a first calf heifer. Lot 17's sire had a lot of positive traits that these sons have inherited – tight sheathed, good feet, classic Angus skull, proper scrotal shape and high fertility – traits often overlooked in search of performance. The Bandit daughters are wide-pinned and hold a little more backfat ensuring reduced costs. Old predictable Montana genetics.

LOT	18	CHAPMAN KING TEN 9762						
		Tattoo: SWC 9762G DOB: April 12 2019 REG#: UNREGISTERED						
		SPRING '21		CROWFOOT 9052W		CROWFOOT EQUATION 5793R		
		BW	-	CHAPMAN KING TEN 4522B		CROWFOOT KELTON 4790P		
		WW	-	C H BLACKBIRD 9717		J R SHARPSHOOTER		
		YW	-			C H BLACKBIRD 6604		
		M	-					
		CE	-	CHAPMAN ERICA 7001E		SINCLAIR RITO 9R7		
		MCE	-	CHAPMAN ERICA 3100A		CHAPMAN ERICA 928W		
		DAM'S PROD						
		BW	WW	205	WR	YR	AOD	NR
		83	645	676	106	104	2	106

Calving ease prospect that sells unregistered due to DNA results on his dams sire. With that, his dam has a 376d CI and bred back early to A.I. service this year after raising another good calving ease bull in 2020. Her dam 3100A has one of the better bulls selling as Lot 59 and she has maintained a 368d CI, while her dam and granddam hold a NR 9/104 and 9/106 with Elite status.



LOT 19

LOT	19	CHAPMAN KING TEN 9797
		Tattoo: SWC 9797G DOB: April 22 2019 REG#: 2185419
SPRING '21		
BW	2.5	CROWFOOT 9052W CHAPMAN KING TEN 4522B C H BLACKBIRD 9717
WW	36	
YW	68	
M	23	CHAPMAN MEMENTO 0513X CHAPMAN PRINCENE 7127E XO CROWFOOT PRINCENE 8831U
CE	3.8	
MCE	2.8	
		DAM'S PROD
BW	WW	205 WR YR AOD NR
88	670	725 113 110 2 113

Lot 19 is a solid bull just over the calving ease threshold while coming off his young dam over the 700 lb weaning mark. These Memento daughters are off to a great start and cover all the basics: good feet, udders and fertility with a soft-made look that includes the fluffy ears. His dam holds a 379d CI and is bred back to early A.I. Her dam also has a 379d CI with a NR 9/103.

LOT	21	CHAPMAN KING TEN 9872
		Tattoo: SWC 9872G DOB: May 07 2019 REG#: 2185439
SPRING '21		
BW	1.5	CROWFOOT 9052W CHAPMAN KING TEN 4522B C H BLACKBIRD 9717
WW	39	
YW	68	
M	19	MC CUMBER 8R101 RITO 161 CHAPMAN ROSE 7144E CHAPMAN KIWI ROSE 011X
CE	4.5	
MCE	3.8	
		DAM'S PROD
BW	WW	205 WR YR AOD NR
81	655	752 118 113 2 118

Calving ease bull by King Ten that runs with the cow bulls. Another heifers' 1st calf, she has a CI of 339d on 2 calves indicating early gestation. She bred back early again this year to her A.I. service and is backed by the Rose cow family, known for their soft-made appearance, fluffy ears and strong udder attachment. Lot 21's maternal granddam achieved Elite status NR 8/108.

LOT	23	CHAPMAN KING TEN 9929
		Tattoo: SWC 9929G DOB: May 26 2019 REG#: 2185445
SPRING '21		
BW	2.2	CROWFOOT 9052W CHAPMAN KING TEN 4522B C H BLACKBIRD 9717
WW	39	
YW	70	
M	19	MC CUMBER 8R101 RITO 161 CHAPMAN LADY ERICA 7162E REMINGTON LADY ERICA 843X
CE	3.8	
MCE	4.5	
		DAM'S PROD
BW	WW	205 WR YR AOD NR
86	635	792 124 118 2 124

Lot 23 is on the edge of what I would call a calving ease heifer bull. Regardless of ones' comfort level, he performed well coming of his young Rito dam indicating he would be a fit for those who select lower birth weight bulls for mature cows. She holds a 378d CI and bred back A.I. in 2020. Lot 23 has at least 3 donor cows showing in his immediate pedigree via 9717, 463 and 3785N.

LOT	20	CHAPMAN KING TEN 9847
		Tattoo: SWC 9847G DOB: April 30 2019 REG#: 2185433
SPRING '21		
BW	2.1	CROWFOOT 9052W CHAPMAN KING TEN 4522B C H BLACKBIRD 9717
WW	41	
YW	71	
M	21	MC CUMBER 8R101 RITO 161 CHAPMAN ZARA 7082E CHAPMAN ZARA 022X
CE	3.8	SINCLAIR ENTREPRENEUR 8R101 B PRIDE 463 OF MC CUMBER CROWFOOT EQUATION 5793R CHAPMAN ZARA 731T
MCE	4.0	
		DAM'S PROD
BW	WW	205 WR YR AOD NR
88	560	636 100 100 2 100

Another King Ten that works into the average of the group, and off a young Rito 161 daughter. Those daughters seem to get better the older they get. Lot 20's dam weaned a good Steadfast son in 2020 and really gained some ground on her calving interval as it sits at 346d, and bred back early to her A.I. service. Her dam had a NR 6/106 and from a line of cows with more scale.

LOT	22	CHAPMAN KING TEN 9912
		Tattoo: SWC 9912G DOB: May 18 2019 REG#: 2185431
SPRING '21		
BW	2.0	CROWFOOT 9052W CHAPMAN KING TEN 4522B C H BLACKBIRD 9717
WW	44	
YW	78	
M	22	CHAPMAN MEMENTO 0505X CHAPMAN CHLOE 7024E CHAPMAN CHLOE 2062Z
CE	5.3	CHAPMAN KAWICH LADY 8065U SINCLAIR RITO 9R7 CHAPMAN CHLOE 8017U
MCE	3.3	
		DAM'S PROD
BW	WW	205 WR YR AOD NR
78	615	744 116 112 2 116

A King Ten suitable for heifers or cows, and similar to Lot 21 for his individual merit. His young Memento dam has a bright future and holds down a 364d CI. She raised another low birth weight Steadfast bull calf in 2020 while rebreeding 1st cycle A.I. Her production ability and fertility is emulated in the Chloe cow family, with her dam also producing the good Lot 09.

COLEMAN *Forte* 752

Tattoo: IMP 752E DOB: January 09 2017 REG#: 2070976



PAPA FORTE 1921



COLEMAN DONNA 714

SPRING '21

BW -0.2
WW 42
YW 76
M 26
CE 10.0
MCE 9.0

PAPA OPTIMA 9818
PAPA FORTE 1921
PAPA ENVIOUS BLACKBIRD 8832

CONNEALY ONWARD
COLEMAN DONNA 714
COLEMAN DONNA 386 AMF

SCOTCH CAP
BLACKCAP D H D 2816
PAPA RITO T POWER D H D 6838
ENVIOUS BLACKBIRD OF RR 7066

CONNEALY LEAD ON
ALTUNE OF CONANGA 6104
BASIN RAINMAKER 654X
KMK DONNA J311 AMF

Progeny Birth Weight Averages: Male 87 lbs

752 has a unique and proven maternal lineage, being sired by Papa Forte known for several profit-oriented traits such as calving ease and calf vigor: as well as moderate framed, easy fleshing females with good fertility. Add in the legacy of the Donna 714 donor and 752 has a pedigree by design for moderate, functional and fertile Angus females. 752 bred 65 cows as a 2-year-old and looked great doing it. Unfortunately, he broke a leg in a bull fight the day before he was to go to stud. Expect a much bigger group of sons in next years' sale.

LOT 24

CHAPMAN FORTE 9851

Tattoo: SWC 9851G DOB: April 30 2019 REG#: 2185371

SPRING '21

BW 0.5
WW 44
YW 77
M 28
CE 6.0
MCE 7.0

PAPA FORTE 1921 DMF DWF M1F
COLEMAN FORTE 752
COLEMAN DONNA 714

SITZ ALLIANCE 6595
HAPPYVALE DELIA 35S
SWENCO DELIA 13H

PAPA OPTIMA 9818
PAPA ENVIOUS BLACKBIRD 8832
CONNEALY ONWARD
COLEMAN DONNA 386 AMF
SITZ TRAVELER 8180
SITZ BARBARAMERE JET 2698
GET-A-LONG CAST IRON 359
SWENCO DELIA 26A

DAM'S PROD

BW	WW	205	WR	YR	AOD	NR
83	685	715	112	109	13	108

Calving ease prospect with a fresh pedigree for many. Lot 24 holds a solid tabulation for individual performance with EPD's reinforcing his calving ease merit. His dam, NR 11/104, is a bigger framed Alliance daughter; a quiet, good milking cow with great udder suspension even on her last calf this year as a 14 year old cow. Her 6th sale qualified son will sell in 2022.

LOT 25

CHAPMAN FORTE 9831

Tattoo: SWC 9831G DOB: April 28 2019 REG#: 2185364

SPRING '21

BW 0.6
WW 46
YW 81
M 26
CE 7.0
MCE 6.0

PAPA FORTE 1921 DMF DWF M1F
COLEMAN FORTE 752
COLEMAN DONNA 714

SINCLAIR MEMENTO 8RL5
CHAPMAN PEARL 0102X
CROWFOOT PEARL 1828L

PAPA OPTIMA 9818
PAPA ENVIOUS BLACKBIRD 8832
CONNEALY ONWARD
COLEMAN DONNA 386 AMF
SINCLAIR RITO LEGACY 3R9
SINCLAIR LADY 06S3 4465
TOMWALL GDAR ROYCE 916
GLADWALL L PEARL 7192

DAM'S PROD

BW	WW	205	WR	YR	AOD	NR
88	655	652	102	102	9	103

Very similar to Lot 24. His dam is also a bigger framed cow and exhibits all the basics just like the dam of Lot 24. She has earned a NR 8/103 while holding a 365d Cl. Her dam has also been very consistent, earning Elite status with a NR 8/107. The sire of Lot 24-27 bred 60 cows as a two year old and held his condition well. Watch for a big group of ½ and ¾ brothers in 2022.

LOT 26

CHAPMAN FORTE 9839

Tattoo: SWC 9839G DOB: April 28 2019 REG#: 2185361

SPRING '21

BW 19
WW 42
YW 71
M 24
CE 6.0
MCE 6.0

PAPA FORTE 1921 DMF DWF M1F
COLEMAN FORTE 752
COLEMAN DONNA 714

CROWFOOT MACHO 4549P
CHAPMAN ROSEWALL 0195X
CROWFOOT ROSEWALL 5770R

PAPA OPTIMA 9818
PAPA ENVIOUS BLACKBIRD 8832
CONNEALY ONWARD
COLEMAN DONNA 386 AMF
O C C MAGNUM 749M
CROWFOOT BLACKBIRD 2537M
O C C LEGACY 839L
CROWFOOT ROSEWALL 1666L

DAM'S PROD

BW	WW	205	WR	YR	AOD	NR
90	670	667	104	103	9	98

These Forte sons will breed more cows for more years. His sire broke his leg in a bull fight the day before he was to be pictured and would have been a cornerstone herd sire here. The sisters to Lot 24-27 are deep bodied and soft made. The dam of Lot 26 is a 1400 lb cow who has earned a NR 7/98. Macho x Legacy x Forte = range ready, fertile females with a lot of longevity.

LOT 27

CHAPMAN FORTE 9768

Tattoo: SWC 9768G DOB: April 16 2019 REG#: 2185367

SPRING '21

BW 1.1
WW 38
YW 64
M 25
CE 4.0
MCE 7.0

PAPA FORTE 1921 DMF DWF M1F
COLEMAN FORTE 752
COLEMAN DONNA 714

PINEBANK WAIGROUP 41/97
CHAPMAN KIWI 634S
BARB WALL P ROSE LEE 5140

PAPA OPTIMA 9818
PAPA ENVIOUS BLACKBIRD 8832
CONNEALY ONWARD
COLEMAN DONNA 386 AMF
PINEBANK WAIG 31/95
PINEBANK 639/88
SHOSHONE LANCE 2315
BAR PATRIOT ROSE LEE B 2120

DAM'S PROD

BW	WW	205	WR	YR	AOD	NR
88	655	648	101	101	13	108

Old 634S did a good job raising this Forte who was her 11th calf weaned. She is not a big cow; but weaned about 53% of her body weight four years past her prime. She will have her 14th calf this year and has earned a NR 12/108 with 5 daughters retained and 3 sale bulls. Her mother earned a NR 15/103. Grab a hold of these sons of grand old cows that have stood the test of time.

CHAPMAN *Equator* 4515B

Tattoo: SWC 4515B DOB: March 20 2014 REG#: 1891570



COLE CREEK BLACK CEDAR 1251

SPRING '21

BW 3.7
WW 73
YW 115
M 20
CE 1.0
MCE 2.0

COLE CREEK BLACK CEDAR 46P
COLE CREEK BLACK CEDAR 1251
COLE CREEK JUANADA SHE 48T

O C C LEGACY 839L
CROWFOOT BLACKBIRD 6369S
CROWFOOT BLACKBIRD 1687L

C H QUANTUM 6247
COLE CREEK CLOVA JUANADA 67
COLE CREEK GOLDMERE 31N
COLE CREEK JUANADA RITA 044

O C C ECHELON 857E
O C C DIXIE ERICA 960E
C H ALLIANCE 9339
C H BLACKBIRD 9717

Progeny Birth Weight Averages: Male 84 lbs | 77 lbs

4515B was retained out of our 2014 calf crop. Of the five bulls we kept, all were all out of paternally prepotent dams that were proven and donor worthy. His dam was one of the high selling cows in the Crowfoot Dispersal and earned a NR 10/102. Her dam and granddam had a NR 11/106 and 14/102 respectively. Note the maternal great granddam, CH Blackbird 9717, is the dam of Reference Sire King Ten 4522B. 4515B was used on heifers and cows and his daughters are some of our best young cows. Proven and predictable maternal excellence.

LOT 28

CHAPMAN BLACK CEDAR 9850

Tattoo: SWC 9850G DOB: April 30 2019 REG#: 2185393

SPRING '21

BW 4.3
WW 56
YW 96
M 26
CE -3.0
MCE 1.0

COLE CREEK BLACK CEDAR 1251
CHAPMAN EQUATOR 4515B
CROWFOOT BLACKBIRD 6369S

CROWFOOT EQUATION 5793R
CHAPMAN GOLDIE 9044W
CHAPMAN GOLDIE 234M

COLE CREEK BLACK CEDAR 46P
COLE CREEK JUANADA SHE 48T
O C C LEGACY 839L
CROWFOOT BLACKBIRD 1687L
O C C LEGACY 839L
CROWFOOT FORKS 755K
BASIN PARTNER 137H
RED OH GOLDIE 508E

DAM'S PROD

BW	WW	205	WR	YR	AOD	NR
96	695	698	109	107	10	107

Lot 28 is a bigger framed cow bull out of a bigger frame cow. He has been one of the heaviest bulls in every measurable stage and will be one of the heavier bulls sale day. He stems from a line of Goldie's known for their milking ability and his dam, maternal granddam and maternal great granddam have earned a NR 9/107, 9/97 and 14/106 respectively. Dam holds a 368d CI.



LOT 29

LOT 29

CHAPMAN BLACK CEDAR 9789

Tattoo: SWC 9789G DOB: April 20 2019 REG#: 2185415

SPRING '21

BW 1.6
WW 56
YW 83
M 24
CE 4.0
MCE 7.0

COLE CREEK BLACK CEDAR 1251
CHAPMAN EQUATOR 4515B
CROWFOOT BLACKBIRD 6369S

CROWFOOT JOKER 6172S
CHAPMAN B ZARA 9062W
BARB WALL B ZARA 6987

COLE CREEK BLACK CEDAR 46P
COLE CREEK JUANADA SHE 48T
O C C LEGACY 839L
CROWFOOT BLACKBIRD 1687L

O C C JOKER 620J
CFCC 1801L
AMBUSH BANDO 01
BAR B ZARA BANDO 969

DAM'S PROD

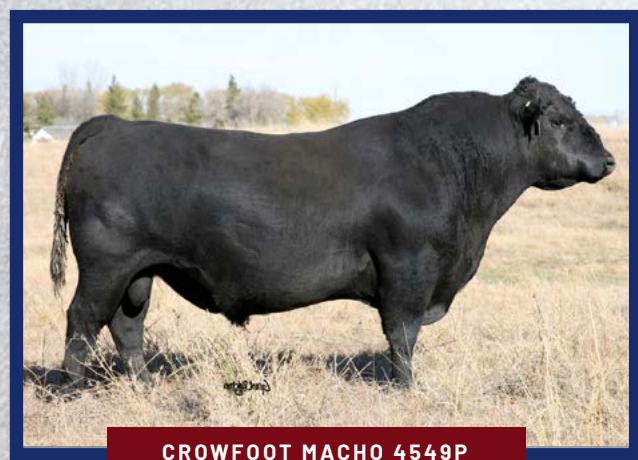
BW	WW	205	WR	YR	AOD	NR
81	715	688	108	106	10	109

Calving ease prospect that came off his dam in good rig. EPD's read below breed average for calving ease and above breed average for performance. His sire was used on heifers and cows. His dam is a big bodied cow who milks good and was used to carry embryo's. She has 3 daughters retained and is the grandmother of the Lot 54 bull. Pedigree designed to fix cow type.



LOT	30					
	CHAPMAN BLACK CEDAR 9784					
Tattoo: SWC 9784G DOB: April 20 2019 REG#: 2185380						
SPRING '21						
BW	19	COLE CREEK BLACK CEDAR 1251		COLE CREEK BLACK CEDAR 46P		
WW	58	CHAPMAN EQUATOR 4515B		COLE CREEK JUANADA SHE 48T		
YW	94	CROWFOOT BLACKBIRD 6369S		O C C LEGACY 839L		
M	24	CROWFOOT EQUATION 5793R		CROWFOOT BLACKBIRD 1687L		
CE	2.0	CHAPMAN LURA 8064U		O C C LEGACY 839L		
MCE	3.0	CHAPMAN LURA 446P		CROWFOOT FORKS 755K		
				LEACHMAN RIGHT TIME		
				GLADWALL L LURA 6174		
		DAM'S PROD				
BW	WW	205	WR	YR	AOD	NR
92	735	735	115	111	11	107

Cow bull that is out of a cow that always brings in the good ones in the fall. In fact, she has achieved Elite status earning a NR 10/108 while holding a 363d CI. She is also the granddam of the lead off bull in the Angus/Simmental section, Lot 76. The sire of Lot 28-31 stamps his daughters with fault free udders and is from the same cow family as the sire of Lot 13-23.



LOT	31					
	CHAPMAN BLACK CEDAR 9832					
Tattoo: SWC 9832G DOB: April 28 2019 REG#: 2185359						
SPRING '21		COLE CREEK BLACK CEDAR 1251		COLE CREEK BLACK CEDAR 46P		
BW	3.5	CHAPMAN EQUATOR 4515B		COLE CREEK JUANADA SHE 48T		
WW	58	CROWFOOT BLACKBIRD 6369S		O C C LEGACY 839L		
YW	94			CROWFOOT BLACKBIRD 1687L		
M	21	CROWFOOT MACHO 4549P		O C C MAGNUM 749M		
CE	0.0	CHAPMAN CHLOE 8017U		CROWFOOT BLACKBIRD 2537M		
MCE	4.0	CHAPMAN CHLOE 617S		CROWFOOT VENTURE 1698L		
				CHAPMAN CHLOE 428P		
				DAM'S PROD		
BW	WW	205	WR	YR	AOD	NR
96	690	714	112	109	11	104

Lot 31 has longevity bred into him over and over. Longevity is a function of fertility, structural integrity, and the ability to raise a good calf; and must be repeatable in the downline. Check out the nursing ratios of the cows in his immediate pedigree: 8017U NR 9/104, 617S NR 10/96, 6339S NR 10/102, 428P NR 14/97, 1687 NR 11/106, 623 NR 10/95, 9717 NR 14/102.



LOT	32					
	CHAPMAN TITANIUM 9814					
Tattoo: SWC 9814G DOB: April 24 2019 REG#: 2185358						
SPRING '21						
BW	3.8	MC CUMBER TITANIUM 3127		SINCLAIR FORTUNATE SON		
WW	49	MC CUMBER TITANIUM 5197		MSS WIX 926 OF MC CUMBER		
YW	83	MISS WIX 062 OF MC CUMBER		SITZ RAINMAKER 6536		
M	26	CROWFOOT JOKER 2029Z		MISS WIX 6145 OF MC CUMBER		
CE	-3.0	CHAPMAN PRINCENE 4129B		CROWFOOT JOKER 6172S		
MCE	1.0	CHAPMAN PRINCENE 3314		CROWFOOT BLACKBIRD 6369S		
				SITZ TRAVELER 9929 MIF		
				GLADWALL PRINCENE 6320		
DAM'S PROD						
BW	WW	205	WR	YR	AOD	NR
95	720	705	110	108	5	106

Herd bull. Lot 32 covers all the basics, stands down on all four corners on a wide base, and has the visual thickness we require. He will be one of the heavier bulls on sale day. Stemming from the Princene cow family known for their productivity, his dam holds a 361d CI. Her dam and granddam were also very productive earning nursing ratios of 12/110 and 10/109 respectively.

SIRE

F

MC CUMBER *Titanium* 5197

Tattoo: IMP 5197C DOB: February 09 2015 REG#: 1952923



SPRING '21

BW 2.5
WW 38
YW 76
M 23
CE 3.0
MCE 2.0

SINCLAIR FORTUNATE SON
MC CUMBER TITANIUM 3127
MISS WIX 926 OF MC CUMBER

SITZ RAINMAKER 6536
MISS WIX 062 OF MC CUMBER
MISS WIX 6145 OF MC CUMBER

SINCLAIR EMULATE 7XT28
SINCLAIR BLACKBIRD 2P8 7079
O C C MISSING LINK 830M
MISS WIX 7011 OF MC CUMBER

SITZ RAINMAKER 6169
SITZ ELSIEMERE 331
SINCLAIR EXTRA 4X13
MISS WIX 7111 OF MCCUMBER

Progeny Birth Weight Averages: Male 85 lbs | 79 lbs

5197 isn't a big frame bull, but his width of base, natural thickness and overall mass is evident. He earned an actual weaning weight of 815 lbs; and gained over 4 lbs/day to earn a 365-day weight of 1431 lbs while scanning a REA of 16.0sq. in. As evident by his Heifer Pregnancy EPD in the top 15% of the breed, his downline should have added fertility. His dam is a Pathfinder and stems from multiple generations of proven Miss Wix females. 5197 combines a lot of economically relevant traits that will enable his downline to thrive in a low input environment.



LOT 33

CHAPMAN TITANIUM 9752

Tattoo: SWC 9752G DOB: March 06 2019 REG#: 2185383

SPRING '21

BW 2.0
WW 38
YW 68
M 25
CE 3.0
MCE 5.0

MC CUMBER TITANIUM 3127
MC CUMBER TITANIUM 5197
MISS WIX 062 OF MC CUMBER

CHAPMAN LEGACY 026S
CHAPMAN EILEEN 952W
CHAPMAN EILEEN 216M

SINCLAIR FORTUNATE SON
MISS WIX 926 OF MC CUMBER
SITZ RAINMAKER 6536
MISS WIX 6145 OF MC CUMBER
O C C LEGACY 839L
PAT LADY ERICA 8984
CROWFOOT AMBUSH 9137J
GLADWALL G V EILEEN 6230

DAM'S PROD

BW	WW	205	WR	YR	AOD	NR
89	755	616	96	98	10	102

Another Titanium cow bull that was one of the heavier bulls at weaning and will be sale day. Unfortunately, his early birthdate impeded his weaning adjustment. Lot 33 combines the high fertility of his sire with the high fertility of the Eileen cow family behind him. His maternal granddam has a NR 13/108 and her dam earned a NR 13/101. No fertility – No Profit.



LOT 34

CHAPMAN TITANIUM 9802

Tattoo: SWC 9802G DOB: April 26 2019 REG#: 2185362

SPRING '21

BW 1.9
WW 46
YW 80
M 26
CE 3.0
MCE 5.0

MC CUMBER TITANIUM 3127
MC CUMBER TITANIUM 5197
MISS WIX 062 OF MC CUMBER

CHAPMAN PAY DAY 4456
CHAPMAN MISS RIO 717T
CHAPMAN MISS RIO 541R

SINCLAIR FORTUNATE SON
MISS WIX 926 OF MC CUMBER
SITZ RAINMAKER 6536
MISS WIX 6145 OF MC CUMBER
CROWFOOT VENTURE 1698L
CHAPMAN NELLIE 210M
CROWFOOT BRUNO 1670L
RED CHAPMAN MISS RIO 225M

DAM'S PROD

BW	WW	205	WR	YR	AOD	NR
92	735	741	116	112	12	105

Good performing cow bull out of soft made cow that quietly contributes and will have her 11th calf this year. These Titanium sons are all above breed average for the HPG EPD. HPG refers to Heifer Pregnancy, or the ability of a sires' daughters to conceive. Enough Titanium daughters have calved and bred back here to confirm. Lot 34's sire is in the top 15% of the breed for HPG.



LOT	35	CHAPMAN TITANIUM 9800
		Tattoo: SWC 9800G DOB: April 22 2019 REG#: 2185376
SPRING '21		
BW	20	MC CUMBER TITANIUM 3127 MC CUMBER TITANIUM 5197 MISS WIX 062 OF MC CUMBER
WW	32	SINCLAIR FORTUNATE SON MSS WIX 926 OF MC CUMBER SITZ RAINMAKER 6536 MISS WIX 6145 OF MC CUMBER
YW	64	
M	23	SINCLAIR IN TIME 9RT10 CHAPMAN BLOSSOM 4031B CHAPMAN BLOSSOM 776T
CE	20	LEACHMAN RIGHT TIME N BAR ENCHANTRESS 4908 DDA EMBLAZON 27C BAR J P BLOSSOM 5M
MCE	5.0	
DAM'S PROD		
BW	WW	205 WR YR AOD NR
88	645	627 98 99 5 98

If building a reputation cow herd or selling reputation replacements, Lot 35 should be of interest. His tabulation reads cow maker, combining the Miss Wix with Emulation top and bottom plus Alliance 6595. Lot 35 traces back to the old Penosky Blossom 28U, N Bar Enchantress 4908 and DDA Melisa 824 donors. His true 1300 lb dam holds a 367d CI and has a bomb proof udder.

LOT	36	CHAPMAN TITANIUM 9808
		Tattoo: SWC 9808G DOB: April 23 2019 REG#: 2185397
SPRING '21		
BW	18	MC CUMBER TITANIUM 3127 MC CUMBER TITANIUM 5197 MISS WIX 062 OF MC CUMBER
WW	39	SINCLAIR FORTUNATE SON MSS WIX 926 OF MC CUMBER SITZ RAINMAKER 6536 MISS WIX 6145 OF MC CUMBER
YW	71	
M	23	MC CUMBER 8R101 RITO 161 CHAPMAN G EILEEN 4010B CHAPMAN G EILEEN 9063W
CE	3.0	SINCLAIR ENTREPRENEUR 8R101 B PRIDE 463 OF MC CUMBER CROWFOOT EQUATION 5793R CROWFOOT G EILEEN 4784P
MCE	3.0	
DAM'S PROD		
BW	WW	205 WR YR AOD NR
89	655	639 100 100 5 100

Balanced bull in the middle of the pack is Lot 36. He combines two feature McCumber-bred bulls that bring together the Miss Wix and B Pride cow families. Both sires are from Pathfinder dams which recognizes Angus cows that excelled in production based on records of performance. The dam of Lot 36 has a 366d CI. The next 3 Eileen's earned a NR 7/100, 12/101 and 12/104.



LOT	37	CHAPMAN TITANIUM 9844
		Tattoo: SWC 9844G DOB: April 29 2019 REG#: 2185374
SPRING '21		
BW	24	MC CUMBER TITANIUM 3127 MC CUMBER TITANIUM 5197 MISS WIX 062 OF MC CUMBER
WW	41	SINCLAIR FORTUNATE SON MSS WIX 926 OF MC CUMBER SITZ RAINMAKER 6536 MISS WIX 6145 OF MC CUMBER
YW	73	
M	24	CROWFOOT JOKER 2029Z CHAPMAN ROSE 4143B CHAPMAN LUELLA 910W
CE	20	CROWFOOT JOKER 6172S CROWFOOT BLACKBIRD 6369S S B R WATERTON 6148S CHAPMAN ROSE 792T
MCE	5.0	
DAM'S PROD		
BW	WW	205 WR YR AOD NR
87	650	650 102 101 5 98

Lots 35-37 are very similar in their performance and propensity as cow makers for low input systems. Lot 37's dam has a 370d CI and is from a line of economically made Rose cows. Her dam will have her 11th calf in 2021 and traces to an Octoraro line of Miss Wix cows plus Emulation 31.

LOT	38	CHAPMAN TITANIUM 9755
		Tattoo: SWC 9755G DOB: April 08 2019 REG#: 2185363
SPRING '21		
BW	21	MC CUMBER TITANIUM 3127 MC CUMBER TITANIUM 5197 MISS WIX 062 OF MC CUMBER
WW	45	SINCLAIR FORTUNATE SON MSS WIX 926 OF MC CUMBER SITZ RAINMAKER 6536 MISS WIX 6145 OF MC CUMBER
YW	76	
M	25	COLE CREEK GOLDMERE 581 CHAPMAN B PRIDE 4088B CHAPMAN B PRIDE 2067Z
CE	3.0	COLE CREEK GOLDMERE 70V COLE CREEK JUANADA 92T CROWFOOT EQUATION 5793R CHAPMAN PRIDE 3327
MCE	4.0	
DAM'S PROD		
BW	WW	205 WR YR AOD NR
88	725	666 104 103 5 113

My recommendation to shift a group of cows to a more maternal, low-input system and follow that up with a terminal sire would be to put together a group of these closely bred Titanium sons. The dam of Lot 38 did a good job carrying him through to weaning as indicated by his actual weight. She has always calved 1st cycle but has jumped to the front of the 1st cycle.



LOT	39	CHAPMAN TITANIUM 9786				
		Tattoo: SWC 9786G DOB: April 20 2019 REG#: 2185396				
		SPRING '21				
		MC CUMBER TITANIUM 3127				
		MC CUMBER TITANIUM 5197				
		MISS WIX 062 OF MC CUMBER				
		SINCLAIR EXQUISITE 1X51				
		CHAPMAN K PRIDE 4072B				
		CHAPMAN K PRIDE 2091Z				
		SINCLAIR FORTUNATE SON				
MSS WIX 926 OF MC CUMBER						
SITZ RAINMAKER 6536						
MISS WIX 6145 OF MC CUMBER						
BW	3.0					
WW	37					
YW	68					
M	25					
CE	0.0					
MCE	3.0					
DAM'S PROD						
BW	WW	205	WR	YR	AOD	NR
92	665	641	100	100	5	102

Cow bull descending from a productive cow family. Check out the nursing ratios of the K Pride's behind Lot 39: 2091Z 5/106, 8067U 10/109 (Elite), 409P 8/105, 226M 11/109, 25G 10/106. Dam holds a 352d Cl. The dam of Sinclair 1X51 is a full sister to DHD Traveler 6807. 6807's influence resonates throughout the offering via the OCC-bred cattle and the Memento's.

LOT	40	CHAPMAN TITANIUM 9864				
		Tattoo: SWC 9864G DOB: May 04 2019 REG#: 2185379				
SPRING '21		MC CUMBER TITANIUM 3127 MC CUMBER TITANIUM 5197 MISS WIX 062 OF MC CUMBER		SINCLAIR FORTUNATE SON MSS WIX 926 OF MC CUMBER SITZ RAINMAKER 6536 MISS WIX 6145 OF MC CUMBER		
BW	17			N BAR EMULATION EXT		
WW	38			C U BEMINDFUL MAID 507E		
YW	68	SINCLAIR EXQUISITE 1X51		SINCLAIR RITO 9R7		
M	23	CHAPMAN IDELETTE 4112B		CHAPMAN IDELETTE 764T		
CE	2.0	CHAPMAN IDELETTE 2013Z				
MCE	3.0			DAM'S PROD		
BW	WW	205	WR	YR	AOD	NR
82	615	628	98	99	5	101

Calving ease Titanium with Emulation top and bottom. The Emulation-sired calves have a lot of newborn vigor. Plus, these forage-developed bulls should give you an extra year or two as true heifer bulls. Idelette dam has a 376d Cl. The Idelette cows came from Happyvale Angus at Stettler. N Bar Emulation EXT traces back to Happyvale Grand Blackcap 30X born in 1966.

LOT	41	CHAPMAN TITANIUM 9865				
		Tattoo: SWC 9865G DOB: May 04 2019 REG#: 2185427				
SPRING '21						
BW	23	MC CUMBER TITANIUM 3127		SINCLAIR FORTUNATE SON		
WW	43	MC CUMBER TITANIUM 5197		MSS WIX 926 OF MC CUMBER		
YW	79	MISS WIX 062 OF MC CUMBER		SITZ RAINMAKER 6536		
M	21			MISS WIX 6145 OF MC CUMBER		
CE	3.0	SINCLAIR RITO 9R7		RITO REVOLVE OR5		
MCE	3.5	CHAPMAN PEARL 4039B		SINCLAIR K BTY 6PV5 25F3		
		CHAPMAN PEARL 1024Y		SINCLAIR IN TIME 9RT10		
				CHAPMAN PEARL 8061U		
		DAM'S PROD				
BW	WW	205	WR	YR	AOD	NR
87	640	654	102	102	5	101

One of the better bulls in the pen, Lot 41 will be easy to pick out sale day for his calving ease phenotype. The Rito 9R7 sons got it done every year, but now the daughters are putting sale features in the sale. Lot 41 offers an Emulation-influenced pedigree. Same Pearl cow family as the good Lot 04. Dam has a 376d Cl. Her dams earned a NR 7/108, 8/107 (Elite) and 9/101.

FREE DELIVERY
TO CENTRAL POINTS IN CANADA AND BILLINGS, MT



SIRE

G

BC Robust 0807

Tattoo: IMP 0807C DOB: December 26 2015 REG#: 2012143



SPRING '21

BW	1.8
WW	55
YW	85
M	12
CE	5.0
MCE	-8.0

BC EAGLE EYE 110-7
BC SURVEYOR 6800
 BC 2266 PRIDES LASS 4132 680

BC PURE PRIDE 327-8
BC 327-8 CP BELLE 0-807
 BC 607 CP BELLE MF 807

B C LOOKOUT 7024
 B C PURE PRIDE ERICA D 110
 B C MATRIX 4132 D
 CANE RIDGE PRIDES LASS 2266L

B C LOOKOUT 7024
 B C PURE PRIDE 10 825J 327
 BC CHARLIE PRIDE 304-6
 BC 901 DR BELLE MATRIX MF607

Progeny Birth Weight Averages: Male 86 lbs | Female 80 lbs

BC Robust 0807 was the high selling bull sourced out of the 2017 Conley Angus Bull Sale. He was the lead off bull in the Champion Yearling Pen of 3 bulls at the 2017 NWSS. He is a very balanced bull: long spined, big hiped and very photogenic in a 5 frame. Perhaps his greatest asset is how he stands down on all four corners on a good foot. An injury on day one of turnout limited him to the last week of breeding in 2018; but he has bred 70 cows in each of 2019 & 2020 with a son also retained from the 2018 calf crop. More sons on the way for 2022.



LOT 42

CHAPMAN ROBUST 9924

Tattoo: SWC 9924G DOB: May 25 2019 REG#: 2185409

SPRING '21

BW	1.0
WW	52
YW	77
M	16
CE	6.0
MCE	1.0

BC SURVEYOR 6800
BC ROBUST 0807
 BC 327-8 CP BELLE 0-807

COLE CREEK GOLDMERE 581
CHAPMAN NEONIA 4014B
 CHAPMAN NEONIA 2009Z

BC EAGLE EYE 110-7
 BC 2266 PRIDES LASS 4132 680
 BC PURE PRIDE 327-8
 BC 607 CP BELLE MF 807
 COLE CREEK GOLDMERE 70V
 COLE CREEK JUANADA 92T
 SINCLAIR RITO 9R7
 CHAPMAN NEONIA 774T

DAM'S PROD

BW	WW	205	WR	YR	AOD	NR
85	570	640	100	100	5	104

Calving ease Robust son that may be the best bull in the sale based on phenotype. He has an outcross lineage to almost everything in Canada with a show bull disposition. One of the youngest bulls, he has performed well against his older contemporaries. His dam holds a 378d CI and produced a sale feature last year. Robust is in the top 1% for foot score EPD's.



LOT 43

CHAPMAN BLACK CEDAR 9857

Tattoo: SWC 9857G DOB: May 02 2019 REG#: 2185416

SPRING '21

BW	3.7
WW	63
YW	94
M	28
CE	-2.0
MCE	5.0

COLE CREEK GOLDMERE 581
RICHMOND BANDIT SRD 67B
 CROWFOOT KELTON 2015Z

RICHMOND BANDIT SRD 67B
CHAPMAN NEONIA 6081D
 CHAPMAN NEONIA 2015Z

COLE CREEK GOLDMERE 70V
 COLE CREEK JUANADA 92T
 CROWFOOT EQUATION 5793R
 CROWFOOT PATTI 7043T

COLE CREEK GOLDMERE 581
 CROWFOOT KELTON 2015Z
 MC CUMBER 536P EXT 7196
 CHAPMAN NEONIA 9029W

DAM'S PROD

BW	WW	205	WR	YR	AOD	NR
88	685	732	115	111	3	115

Good performing cow bull who will be one of the heavier bulls' sale day. From the same cow family as Lot 42 and is double-bred Goldmere and double-bred Equation. These Bandits have been popular in past sales and offer more milk, more docility and responsible frame. His dam is an efficient, wide-pinned cow and emulates her EXT-sired dam (NR 6/101) in udder quality.

SIRE

H

RICHMOND *Bandit* SRD 67B

Tattoo: SRD 67B DOB: February 11 2014 REG#: 1777593



SPRING '21

BW 41
WW 58
YW 88
M 29
CE -1.0
MCE 5.0

COLE CREEK GOLDMERE 70V
COLE CREEK GOLDMERE 581
COLE CREEK JUANADA 92T

CROWFOOT EQUATION 5793R
CROWFOOT KELTON 2015Z
CROWFOOT PATTI 7043T

COLE CREEK GOLDMERE 31N
COLE CREEK CLOVA JUANADA 16N
COLE CREEK GOLDMERE 31N
COLE CREEK JUANADA 32P

O C C LEGACY 839L
CROWFOOT FORKS 755K
O C C MOONSHINE 740M
Z O E KELTON 9978

Progeny Birth Weight Averages: Male 86 lbs | Female 80 lbs

In 2014 we bought four of the top bulls from Cole Creek Angus. The Goldmere 581 bull was the most consistent, so when the high selling bred heifer out of the Crowfoot Dispersal had a son as her first calf, we bought him. His progeny exhibit added docility, scrotal and have very sound feet and a lot of middle. His daughters also exhibit extra pelvic width. He ranks high for Milk and Total Maternal EPD's, yet that added maternal capacity does not draw them down in condition in the fall. Lots of traditional Angus characteristics.



LOT 44

CHAPMAN BANDITO 9840

Tattoo: SWC 9840G DOB: April 28 2019 REG#: 2185467

SPRING '21

BW 14
WW 46
YW 72
M 25
CE 4.0
MCE 9.0

COLE CREEK GOLDMERE 581
RICHMOND BANDIT SRD 67B
CROWFOOT KELTON 2015Z

SINCLAIR EXTRA 4X13
CHAPMAN CHLOE 814U
CHAPMAN CHLOE 204M

COLE CREEK GOLDMERE 70V
COLE CREEK JUANADA 92T
CROWFOOT EQUATION 5793R
CROWFOOT PATTI 7043T

N BAR EMULATION EXT
N BAR LADY IDA S C C 2P37
LEACHMAN RIGHT TIME
GLADWALL B CHLOE 1161

DAM'S PROD

BW	WW	205	WR	YR	AOD	NR
83	660	684	107	105	11	98

Calving ease Bandit that has cow bull weaning weights and post-weaning growth. Another good bull from the Chloe cow family. His dam is a deep made, efficient type as were her mother and grandmother. Combine that with the cow makers in his immediate pedigree and Lot 44 is a calving ease recipe for making your own replacements.

LOT 45

CHAPMAN BANDITO 9796

Tattoo: SWC 9796G DOB: April 21 2019 REG#: 2185390

SPRING '21

BW 4.0
WW 43
YW 72
M 25
CE 1.0
MCE 6.0

COLE CREEK GOLDMERE 581
RICHMOND BANDIT SRD 67B
CROWFOOT KELTON 2015Z

CROWFOOT MACHO 4549P
CHAPMAN B PRIDE 9013W
CHAPMAN PRIDE 729T

COLE CREEK GOLDMERE 70V
COLE CREEK JUANADA 92T
CROWFOOT EQUATION 5793R
CROWFOOT PATTI 7043T

O C C MAGNUM 749M
CROWFOOT BLACKBIRD 2537M
CROWFOOT EQUATION 5793R
CHAPMAN PRIDE 218M

DAM'S PROD

BW	WW	205	WR	YR	AOD	NR
84	695	672	105	104	10	98

Calving ease bull and statistically almost a performance twin to Lot 44. The Bandits were well accepted in the past sales and have traditional Angus characteristics and the extra docility for those who require it. Almost a Crowfoot pedigree, this is his dam's 3rd sale qualified son and her productivity is supported by her maternal granddam who achieved Elite status, NR 10/102.



SINCLAIR EXTRA 4X13



LOT	46		CHAPMAN BLACK CEDAR 9853			
			Tattoo: SWC 9853G DOB: April 30 2019 REG#: 2185387			
SPRING '21		COLE CREEK GOLDMERE 581		COLE CREEK GOLDMERE 70V		
BW		3.1		COLE CREEK JUANADA 92T		
WW		49		CROWFOOT EQUATION 5793R		
YW		77		CROWFOOT PATTI 7043T		
M		29		RED BJR JR 105		
CE		0.0		RED SSS EMULY 163C		
MCE		6.0		CROWFOOT VENTURE 1698L		
				CHAPMAN PRIDE 226M		
				DAM'S PROD		
BW		WW	205	WR	YR	AOD
88		695	725	114	110	12
				NR		
				110		

Herd Bull candidate. Lot 46 will be found sale day and is out of one of my favorite cows in type and for her perennial productivity. This is her 6th sale qualified bull with every daughter retained. Her productivity is no mistake as she is a part of the K Pride tribe. The first 4 maternal dams in his pedigree, including the dam, have earned nursing ratios of 10/105, 8/105, 11/109 and 10/106.



VIEW SALE VIDEOS AT
WWW.CHAPMANCATTLE.COM

LOT	47		CHAPMAN BANDITO 9987			
			Tattoo: SWC 9987G DOB: May 02 2019 REG#: PENDING			
SPRING '21		COLE CREEK GOLDMERE 581		COLE CREEK GOLDMERE 70V		
BW		2.4		COLE CREEK JUANADA 92T		
WW		39		CROWFOOT EQUATION 5793R		
YW		64		CROWFOOT PATTI 7043T		
M		28		BASIN MAX 104J		
CE		2.0		GLADWALL SARITA 8255		
MCE		5.5		MC CUMBER 7111 TOTAL VALUE		
				BARB WALL ZARA BOND 469		
				DAM'S PROD		
BW		WW	205	WR	YR	AOD
94		660	695	108	107	12
				NR		
				100		

Cow bull who will be one of the heavier bulls on sale day. Dallas Jensen always said as long as the weaning ratio is greater than the birth weight, you'll be fine on these bigger bulls at birth. Lot 47's dam was going strong at the age of 13 until she acquired a stifle injury this fall. She reminded me of the classic big range Angus cows. Her dam had a NR 9/107 and her dam 10/99.



LOT	48		CHAPMAN BANDITO 9988			
			Tattoo: SWC 9988G DOB: April 09 2019 REG#: PENDING			
SPRING '21		COLE CREEK GOLDMERE 581		COLE CREEK GOLDMERE 70V		
BW		3.3		COLE CREEK JUANADA 92T		
WW		44		CROWFOOT EQUATION 5793R		
YW		68		CROWFOOT PATTI 7043T		
M		27		O C C JOKER 620J		
CE		1.5		CFCC 1801L		
MCE		6.5		O C C MAGNUM 749M		
				CROWFOOT BETSEY 1715L		
				DAM'S PROD		
BW		WW	205	WR	YR	AOD
82		713	745	112	102	11
				NR		
				106		

Calving ease Bandit who is long and thick with solid performance data and most importantly, is backed by a good cow. In fact, 8003U was my favorite Joker daughter, and we had a lot of them. She had earned a NR 10/106 with a 363d CI and was as sound as they come but got tipped downhill on a bedding pack last spring. Her dam was a smaller, fertile cow with a NR 11/101.



LOT	49	CHAPMAN BLACK CEDAR 9916				
		Tattoo: SWC 9916G DOB: May 19 2019 REG#: 2185402				
SPRING '21						
BW	2.5	COLE CREEK GOLDMERE 581		COLE CREEK GOLDMERE 70V		
WW	53	RICHMOND BANDIT SRD 67B		COLE CREEK JUANADA 92T		
YW	78	CROWFOOT KELTON 2015Z		CROWFOOT EQUATION 5793R		
M	28	CHAPMAN ALLIANCE 262M		CROWFOOT PATTI 7043T		
CE	0.0	CHAPMAN ROSE LEE 785T		SITZ ALLIANCE 6595		
MCE	7.0	BARBWALL P ROSE LEE 5140		GLADWALL G EILEEN 6339		
				SHOSHONE LANCE 2315		
				BAR PATRIOT ROSE LEE B 2120		
		DAM'S PROD				
BW	WW	205	WR	YR	AOD	NR
86	655	744	116	112	12	108

Lot 49 is right on the threshold to be considered a sleep at night calving ease bull, but he is a perfect fit for those wanting a potential heifer bull that can also breed cows. His dam weighed 1440 lbs this fall; and Lot 49 is her 3rd sale qualified bull. She comes from a cow family where quality udders define their longevity. Her NR is 10/108 and her dam earned a NR 15/103.

LOT	50	CHAPMAN BANDITO 9813				
		Tattoo: SWC 9813G DOB: April 24 2019 REG#: 2185408				
SPRING '21		COLE CREEK GOLDMERE 581		COLE CREEK GOLDMERE 70V		
BW	3.1	RICHMOND BANDIT SRD 67B		COLE CREEK JUANADA 92T		
WW	51	CROWFOOT KELTON 2015Z		CROWFOOT EQUATION 5793R		
YW	79			CROWFOOT PATTI 7043T		
M	28	CROWFOOT EQUATION 5793R		O C C LEGACY 839L		
CE	1.0	CHAPMAN CHLOE 204M		CROWFOOT FORKS 755K		
MCE	5.0			LEACHMAN RIGHT TIME		
				GLADWALL B CHLOE 1161		
				DAM'S PROD		
BW	WW	205	WR	YR	AOD	NR
91	720	705	110	108	10	103

Good numbers on this thick forage-developed bull. His sisters all have just a little more backfat though the winter indicating cost-efficient cows. Lot 50 is double bred to OCC Legacy plus Right Time – bulls known in Angus circles for the females they sire. From the Chloe cow family, his dam holds a 366d day CI, is a smaller made cow but weans a high % of her body weight.

LOT	51	CHAPMAN BANDITO 9783				
		Tattoo: SWC 9783G DOB: April 20 2019 REG#: 2185372				
SPRING '21						
BW	4.5	COLE CREEK GOLDMERE 581		COLE CREEK GOLDMERE 70V		
WW	54	RICHMOND BANDIT SRD 67B		COLE CREEK JUANADA 92T		
YW	85	CROWFOOT KELTON 2015Z		CROWFOOT EQUATION 5793R		
M	27	CROWFOOT EQUATION 5793R		CROWFOOT PATTI 7043T		
CE	-4.0	CHAPMAN KAWICH LADY 9051W		O C C LEGACY 839L		
MCE	3.0	CHAPMAN KAWICH LADY 3316		CROWFOOT FORKS 755K		
				HIGH VALLEY 707 OF 469 DWC		
				GLADWALL KAWICH LADY 6186		
		DAM'S PROD				
BW	WW	205	WR	YR	AOD	NR
94	725	699	109	107	10	104

Don't be distracted by Auctioneer Don Raffans' sharp sale day attire when he tells you this bull weaned heavy and is above breed average for performance EPD's. The Bandits are always born stout but come unassisted. Lot 51 will cover a lot of cows in his lifetime extending your bull budget; and is backed by a productive cow entering her 12th year in 2021. She has a 363d CI.

LOT	52	CHAPMAN BANDITO 9788				
		Tattoo: SWC 9788G DOB: April 20 2019 REG#: 2185400				
SPRING '21		COLE CREEK GOLDMERE 581		COLE CREEK GOLDMERE 70V		
BW	3.3	RICHMOND BANDIT SRD 67B		COLE CREEK JUANADA 92T		
WW	60	CROWFOOT KELTON 2015Z		CROWFOOT EQUATION 5793R		
YW	95			CROWFOOT PATTI 7043T		
M	27	DDA EMBLAZON 27C		O C C EMBLAZON 854E		
CE	-1.0	CHAPMAN ROSE 8057U		D D A MELISA 824		
MCE	3.0	CHAPMAN ROSE 4405		CROWFOOT VENTURE 1698L		
				CHAPMAN ROSE 208M		
		DAM'S PROD				
BW	WW	205	WR	YR	AOD	NR
94	780	778	122	116	11	115

Not much different to say here that wasn't said for Lot 51. Both bulls are very similar. In fact, both bulls will most likely be a pair in the ring sale day. His dam is a big volume cow and entering her 13th year in 2021. She has a 364d CI and earned Elite status. Lot 52 is her 5th sale qualified son with another slated for 2022. From the soft-made and fertile Rose cow family.

LOT	53	CHAPMAN BANDITO 9766				
		Tattoo: SWC 9766G DOB: April 13 2019 REG#: 2185404				
SPRING '21		COLE CREEK GOLDMERE 581		COLE CREEK GOLDMERE 70V		
BW	3.0	RICHMOND BANDIT SRD 67B		COLE CREEK JUANADA 92T		
WW	44	CROWFOOT KELTON 2015Z		CROWFOOT EQUATION 5793R		
YW	70			CROWFOOT PATTI 7043T		
M	27	CROWFOOT EQUATION 5793R		O C C LEGACY 839L		
CE	0.0	CHAPMAN EILEEN 937W		CROWFOOT FORKS 755K		
MCE	5.0	GLADWALL G V EILEEN 6230		N BAR IMPACT V53		
				GLADWALL G V EILEEN 4101		
		DAM'S PROD				
BW	WW	205	WR	YR	AOD	NR
90	640	600	94	95	10	100

These Bandits are a result of multi sire pasture breeding. DNA results show the sire of Lot 43-53 as siring the highest % of calves among 4 other sires. If a bull has sub-par libido or sub-par fertility and isn't doing his job, it doesn't matter how big his weaning weight was or how much he cost. We expect our herd bulls to breed large groups every year – it helps if their sire did too.

XO CROWFOOT *Equ* 268Z

Tattoo: XO 268Z DOB: February 19 2012 REG#: 1689402



SPRING '21

BW	0.0
WW	37
YW	67
M	28
CE	9.0
MCE	6.0

O C C LEGACY 839L
CROWFOOT EQUATION 5793R
 CROWFOOT FORKS 755K

CROWFOOT 6071S
XO CROWFOOT DIXIE ERICA 828U
 CROWFOOT DIXIE ERICA 6422S

O C C ECHELON 857E
 O C C DIXIE ERICA 960E
 TOMWALL PIED PIPER 413
 GLADWALL B REV ERICA 7289

O C C ECHELON 857E
 CROWFOOT G EILEEN 9156
 SITZ ALLIANCE 9160
 CROWFOOT DIXIE ERICA 1626L

Progeny Birth Weight Averages Male 86 lbs | 80 lbs

"268" was acquired from Crowfoot Cattle as their high selling Angus bull in 2013. He is a bull that worked his way up the ladder, initially being used in a multi-sire pasture, to a few consecutive years as a heifer bull, and then on to mature cows. He sires a big middle in his progeny, and they are easy keepers and easy to work with. At the age of 9, he was still very sound and stood down on all four corners with a big hoof with very good shape. His dam and maternal grand dam both earned Elite status with the Association.



LOT 54

CHAPMAN EQUIVALENCE 9750

Tattoo: SWC 9750G DOB: January 22 2019 REG#: 2185385

SPRING '21

BW	0.6
WW	37
YW	59
M	27
CE	7.5
MCE	7.0

CROWFOOT EQUATION 5793R
XO CROWFOOT EQU 268Z
 XO CROWFOOT DIXIE ERICA 828U

CHAPMAN MEMENTO 0505X
CHAPMAN ZARA 5005C
 CHAPMAN B ZARA 9062W

O C C LEGACY 839L
 CROWFOOT FORKS 755K
 CROWFOOT 6071S
 CROWFOOT DIXIE ERICA 6422S

SINCLAIR MEMENTO 8RL5
 CROWFOOT REV ERICA 5752R
 CROWFOOT JOKER 6172S
 BARB WALL B ZARA 6987

DAM'S PROD

BW	WW	205	WR	YR	AOD	NR
83	870	633	100	100	4	100

Calving ease prospect that has extra dimension and volume. His dam is the same way and stems from the Zara cow family that always has had a little more power. Her dam also produced Lot 29. Talk about getting your money's worth out of the herd bulls, the sire of Lot 54, 268Z, and the maternal grandsire, 0505X, have 515 naturally sired calves recorded with the association: 2 bulls!



LOT 55

CHAPMAN EQUIVALENCE 9760

Tattoo: SWC 9760G DOB: April 09 2019 REG#: 2185405

SPRING '21

BW	0.6
WW	50
YW	84
M	25
CE	7.0
MCE	6.0

CROWFOOT EQUATION 5793R
XO CROWFOOT EQU 268Z
 XO CROWFOOT DIXIE ERICA 828U

SINCLAIR RITO 9R7
CHAPMAN PRINCESS 3004A
 CHAPMAN PRINCESS 9026W

O C C LEGACY 839L
 CROWFOOT FORKS 755K
 CROWFOOT 6071S
 CROWFOOT DIXIE ERICA 6422S

RITO REVOLVE OR5
 SINCLAIR K BTY 6PV5 25F3
 CROWFOOT JOKER 6172S
 CHAPMAN PRINCESS 619S

DAM'S PROD

BW	WW	205	WR	YR	AOD	NR
82	740	682	107	105	6	103

Calving ease 268Z son who looks the part in person, with a nice birth to weaning to sale day spread. His EPD tabulation also reinforces his balance between birth weight and growth. His dam holds a 364d CI. This is her 3rd sale qualified son with another Robust slated for 2022. Lot 55's maternal granddam achieved Elite status and earned a NR 10/108.



LOT 56

CHAPMAN EQUIVALENCE 9817

Tattoo: SWC 9817G DOB: April 24 2019 REG#: 2185410

SPRING '21

BW 1.6
WW 49
YW 78
M 25
CE 3.0
MCE 6.0

CROWFOOT EQUATION 5793R
XO CROWFOOT EQU 268Z
XO CROWFOOT DIXIE ERICA 828U

MC CUMBER 536P EXT 7196
CHAPMAN NEONIA 2015Z
CHAPMAN NEONIA 9029W

O C C LEGACY 839L
CROWFOOT FORKS 755K
CROWFOOT 6071S
CROWFOOT DIXIE ERICA 6422S
SITZ JLS EMULATION EXT 536P
LASSIE 434 OF MC CUMBER
CROWFOOT JOKER 6172S
CHAPMAN NEONIA 690S

DAM'S PROD

BW	WW	205	WR	YR	AOD	NR
89	695	681	107	105	7	102

Writing footnotes on these 268Z sons can get repetitive as they are more or less all stamped the same way, but Lot 56 is a cow bull with the thickness bred-in and not fed-in. A cowboy's kind of bull, his immediate pedigree reads cow maker, with Legacy, N Bar EXT, and Joker; and right in behind those Sitz Alliance 6595 and OCC Glory. Lot 56's dam has a 356d calving interval.



LOT 57

CHAPMAN EQUIVALENCE 9845

Tattoo: SWC 9845G DOB: April 29 2019 REG#: 2185386

SPRING '21

BW 0.5
WW 41
YW 76
M 26
CE 7.0
MCE 7.0

CROWFOOT EQUATION 5793R
XO CROWFOOT EQU 268Z
XO CROWFOOT DIXIE ERICA 828U

COLEMAN MISSING LINK 9267
CHAPMAN NELLIE 2037Z
CHAPMAN NELLIE 0124X

O C C LEGACY 839L
CROWFOOT FORKS 755K
CROWFOOT 6071S
CROWFOOT DIXIE ERICA 6422S
O C C MISSING LINK 830M
BOHI PURE PRIDE 6096
SINCLAIR MEMENTO 8RL5
CHAPMAN NELLIE 210M

DAM'S PROD

BW	WW	205	WR	YR	AOD	NR
83	680	680	106	105	7	101

Calving ease 268Z son that is one of the better bulls in the pen. The sire and his sons have been used in purebred and commercial herds with success on heifers, cows, or both. In fact, Lot 57's sire spent his early years proving his merit in multi sire breeding pastures. His dam comes from a line of photogenic cows and holds a 367d CI. This is her 3rd sale qualified son. Good bull.



LOT 58

CHAPMAN EQUIVALENCE 9834

Tattoo: SWC 9834G DOB: April 28 2019 REG#: 2185369

SPRING '21

BW 0.3
WW 39
YW 63
M 25
CE 7.0
MCE 7.0

CROWFOOT EQUATION 5793R
XO CROWFOOT EQU 268Z
XO CROWFOOT DIXIE ERICA 828U

CHAPMAN LEGACY 026S
CHAPMAN ROSE 129Y
CHAPMAN ROSE 45P

O C C LEGACY 839L
CROWFOOT FORKS 755K
CROWFOOT 6071S
CROWFOOT DIXIE ERICA 6422S
O C C LEGACY 839L
PAT LADY ERICA 8984
CROWFOOT BRUNO 1670L
GLADWALL ROSE OF L 1173

DAM'S PROD

BW	WW	205	WR	YR	AOD	NR
84	685	682	107	105	8	103

Calving ease bull who combines many of the better original Walling cows from Montana. Everything in his pedigree originated from Crowfoot Cattle. His dam holds a 366d CI; and is a smaller but efficient cow who weans a high % of her body weight. Note the next four dams behind her have averaged 11 calves weaned. Double-bred Legacy and the Rev Erica 7289 cow.



LOT 59

**VISIT US
ONLINE**
www.chapmancattle.com
for more sale information
and to learn more about
Chapman Cattle Company.



LOT 61

LOT	59					
	CHAPMAN EQUIVALENCE 9985					
	Tattoo: SWC 9985G DOB: April 22 2019 REG#: 2185391					
SPRING '21						
BW	12	CROWFOOT EQUATION 5793R		O C C LEGACY 839L		
WW	43	XO CROWFOOT EQU 268Z		CROWFOOT FORKS 755K		
YW	74	XO CROWFOOT DIXIE ERICA 828U		CROWFOOT 6071S		
M	21	SINCLAIR RITO 9R7		CROWFOOT DIXIE ERICA 6422S		
CE	6.0	CHAPMAN ERICA 3100A		RITO REVOLVE OR5		
MCE	6.0	CHAPMAN ERICA 928W		SINCLAIR K BTY 6PV5 25F3		
				CHAPMAN LEGACY 026S		
				CHAPMAN ERICA 637S		
				DAM'S PROD		
BW	WW	205	WR	YR	AOD	NR
81	690	670	100	100	6	92

Calving ease 268Z bull and one of the better bulls in the pen. These 268Z sons are easy to handle, have a high libido, good feet and will hold their condition. His dam has a 368d CI and is a lot more productive than her nursing ratio reads. She is also the granddam of Lot 18. Proven cow family with nursing ratios for 928W (9/104), 637S (9/106 Elite), 42P (11/105 Elite).

LOT	60					
	CHAPMAN EQUIVALENCE 9774					
	Tattoo: SWC 9774G DOB: April 16 2019 REG#: 2185465					
SPRING '21						
BW	0.7	CROWFOOT EQUATION 5793R		O C C LEGACY 839L		
WW	36	XO CROWFOOT EQU 268Z		CROWFOOT FORKS 755K		
YW	66	XO CROWFOOT DIXIE ERICA 828U		CROWFOOT 6071S		
M	28	COLE CREEK CEDAR RIDGE 1		CROWFOOT DIXIE ERICA 6422S		
CE	7.0	CROWFOOT BLACKBIRD 3038A		COLE CREEK CEDAR RIDGE IV		
MCE	5.0	CROWFOOT BLACKBIRD 1045Y		COLE CREEK JUANADA BIRD 38N		
				CROWFOOT 9052W		
				CROWFOOT 8011U		
				DAM'S PROD		
BW	WW	205	WR	YR	AOD	NR
87	655	621	97	98	6	94

Every immediate ancestor of Lot 60 originated from Crowfoot Cattle. Those were (and still are) the type of cattle that enables a ranch to be profitable long term. His dam holds a 357d CI and is a smaller made cow with a good udder. This is her 2nd sale qualified son with another in the yearling bull pen. Lots of calving ease bred into these 268Z sons. Expect extra newborn vigor.

LOT	61					
	CHAPMAN EQUIVALENCE 9785					
	Tattoo: SWC 9785G DOB: April 20 2019 REG#: 2185389					
SPRING '21						
BW	0.7	CROWFOOT EQUATION 5793R		O C C LEGACY 839L		
WW	36	XO CROWFOOT EQU 268Z		CROWFOOT FORKS 755K		
YW	60	XO CROWFOOT DIXIE ERICA 828U		CROWFOOT 6071S		
M	28	CROWFOOT JOKER 6172S		CROWFOOT DIXIE ERICA 6422S		
CE	6.0	CHAPMAN PRIDE 3081A		O C C JOKER 620J		
MCE	7.0	CHAPMAN PRIDE 775T		CFCC 1801L		
				CHAPMAN ALLIANCE 259M		
				KLUZAK PRIDE 25G		
				DAM'S PROD		
BW	WW	205	WR	YR	AOD	NR
82	660	636	100	100	6	104

Calving ease prospect. These sons of 268Z don't go to an extreme in any one trait but rather balance a lot of traits well. His dam holds a 362d CI and stems from the productive K Pride cow family. This is her 2nd sale qualified son with another by Robust that is on target for 2022. Her dam and granddam have earned nursing ratios of 10/101 and 10/106 respectively. Good bull!



LOT	62	CHAPMAN EQUIVALENCE 9799				
		Tattoo: SWC 9799G DOB: April 22 2019 REG#: 2185360				
SPRING '21						
BW	0.7	CROWFOOT EQUATION 5793R		O C C LEGACY 839L		
WW	25	XO CROWFOOT EQU 268Z		CROWFOOT FORKS 755K		
YW	49	XO CROWFOOT DIXIE ERICA 828U		CROWFOOT 6071S		
M	25	CHAPMAN RITO LEGACY 218U		CROWFOOT DIXIE ERICA 6422S		
CE	7.0	CHAPMAN KIWI ZARA 101Y		SINCLAIR RITO LEGACY 3R9		
MCE	7.0	CHAPMAN KIWI 919W		PAT LADY ERICA 8984		
				CROWFOOT MACHO 4549P		
				CHAPMAN KIWI 661S		
		DAM'S PROD				
BW	WW	205	WR	YR	AOD	NR
85	585	569	89	92	8	107

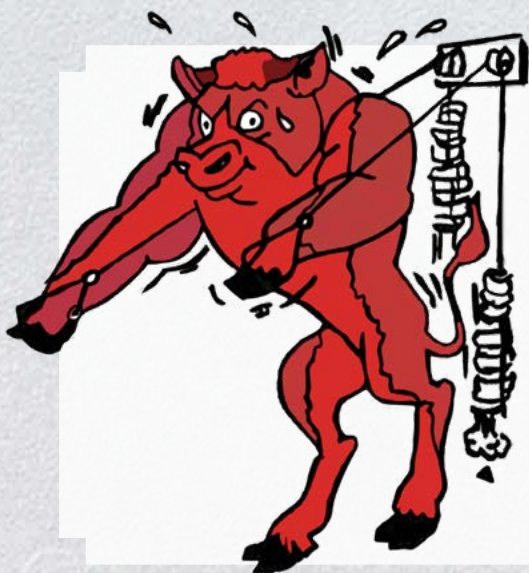
Calving ease son of a calving ease sire. In fact, his immediate pedigree is built from proven calving ease sires. How do I know? Equation, Macho, 268Z and 218U were resident herd sires here and the 5th, OCC Legacy, shows up in almost every pedigree we have. Lot 62 is a deep made bull, clean fronted and will get noticed sale day and is recommended for heifers.

LOT	63	CHAPMAN EQUIVALENCE 9807				
		Tattoo: SWC 9807G DOB: April 23 2019 REG#: 2185381				
SPRING '21						
BW	0.5	CROWFOOT EQUATION 5793R		O C C LEGACY 839L		
WW	39	XO CROWFOOT EQU 268Z		CROWFOOT FORKS 755K		
YW	70	XO CROWFOOT DIXIE ERICA 828U		CROWFOOT 6071S		
M	25			CROWFOOT DIXIE ERICA 6422S		
CE	5.0	SINCLAIR IN TIME 9RT10		LEACHMAN RIGHT TIME		
MCE	7.0	CHAPMAN BLACKBIRD 1077Y		N BAR ENCHANTRESS 4908		
		RED CHAPMAN BLACKBIRD 8006U		RED CROWFOOT RAMBLER 1038L		
				RED CROWFOOT BLACKBIRD 1044L		
BW	WW	205	WR	YR	DAM'S PROD	NR
88	700	683	107	105	8	107

Lot 63 is a bull that will work on larger heifers or cows. His lineage and EPD's reinforce his calving ease potential but his actual birth weight may be over the threshold for some. I lean towards calving ease versus actuals; but weigh both accordingly. His dam was purchased as a winter calving cow, and moved into our spring calving, therefore skewing her calving interval.

LOT	64	CHAPMAN EQUIVALENCE 9821				
		Tattoo: SWC 9821G DOB: April 25 2019 REG#: 2185378				
SPRING '21						
BW	1.6	CROWFOOT EQUATION 5793R		O C C LEGACY 839L		
WW	50	XO CROWFOOT EQU 268Z		CROWFOOT FORKS 755K		
YW	82	XO CROWFOOT DIXIE ERICA 828U		CROWFOOT 6071S		
M	26			CROWFOOT DIXIE ERICA 6422S		
CE	4.0	MC CUMBER 536P EXT 7196		SITZ JLS EMULATION EXT 536P		
MCE	5.0	CHAPMAN ROSEWALL 2027Z		LASSIE 434 OF MC CUMBER		
		CHAPMAN ROSEWALL 9015W		CROWFOOT 2711M		
				CROWFOOT ROSEWALL 5770R		
		DAM'S PROD				
BW	WW	205	WR	YR	AOD	NR
88	695	683	107	105	7	107

Last call on 268Z sons who have sold to good purebred and commercial herds for years. Lot 64 is similar to Lot 63 - a little more birth weight to be called a heifer bull, but would classify as a calving ease cowmaker. His dam holds a 372d CI and traces to Emulation 3 times and OCC Legacy in her immediate pedigree. Her dam and granddam have a NR 8/101 and 11/99.



"SIGHT UNSEEN PURCHASE PLAN"

We would prefer to have everyone in attendance for sale day, but realistically we know there are scheduling conflicts and distance limitations. Regardless of the situation, we handle many sight-unseen bull purchases every year, and have successfully placed cattle into 6 provinces this way. Almost every one of those original sight-unseen purchases has resulted in repeat orders. In fact, of all the bulls sold sight-unseen, we have only had to bring 1 bull home! We know the cattle well, and realistically some of our customers prefer to allow us to select their bull power for them. Please contact Silas, to discuss your bull requirements.

100% Satisfaction Guaranteed!

Tattoo: DMM 11E DOB: January 08 2017 REG#: 1965701



NORTHERN VIEW SMW GUSTOV 3Z

SPRING '21

BW 4.4
WW 72
YW 125
M 21
CE -4.0
MCE 3.0

REMITALL H RACHIS 21R
NORTHERN VIEW SMW GUSTOV 3Z
ISLA BANK NEONIA 27S

S A V HERITAGE 6295

DMM MISS ESSENCE 46A

DMM MISS ESSENCE 61W

REMITALL NIGHTHAWK 37N
HENDERSON MISSIE 32'02
BLACK RIDGE W WIDESPREAD 2K
ISLA BANK NEONIA 27N

CAR DUKE 104

S A V BLACKCAP MAY 4136

GUMBO GULCH CREED 94S

DMM MISS DYNA ESSENCE 7M

Progeny Birth Weight Averages Male 89 lbs | Female 80 lbs

Sometimes in the purebred world, the good cattle aren't too far from home. DMM said they had a bull that would fall in line with my desired phenotype. I had seen 11E's sire in stud and really appreciated his overall type and foot structure for a big bull. Plus, 11E stems from the Miss Essence cow family that includes the 2012 Show Female of the Year, so I drove the 20 minutes over to Bashaw and purchased him after seeing his dam. An outcross to everything we have, the Gustov bull complimented the cows he received, and the foot quality is evident.



LOT 65

LOT

65

CHAPMAN GUSTOV 9758

Tattoo: SWC 9758G DOB: April 09 2019 REG#: 2185413

SPRING '21

BW 2.8
WW 61
YW 107
M 24
CE 0.0
MCE 4.0

NORTHERN VIEW SMW GUSTOV 3Z

DMM RUMBLE 11E

DMM MISS ESSENCE 46A

CROWFOOT EQUATION 5793R

CHAPMAN JEANNE 750T

CHAPMAN JEANNE 202M

REMITALL H RACHIS 21R

ISLA BANK NEONIA 27S

S A V HERITAGE 6295

DMM MISS ESSENCE 61W

O C C LEGACY 839L

CROWFOOT FORKS 755K

LEACHMAN RIGHT TIME

GLADWALL JEANNE T 2114

DAM'S PROD

BW	WW	205	WR	YR	AOD	NR
87	750	718	112	109	12	104

Herd bull. Wide top, good feet and statistically on the mark. Outcross pedigree for many. The best part of Lot 65 is his dam. Entering her 14th year in 2021, she has now earned donor status after 8 sale qualified sons, including two consecutive high sellers in 2016-17. Her dam earned a NR 9/101. Combine that with the Miss Essence cow family on top. Some of the best in Lot 65.

LOT

66

CHAPMAN GUSTOV 9790

Tattoo: SWC 9790G DOB: April 20 2019 REG#: 2185384

SPRING '21

BW 2.6
WW 56
YW 101
M 23
CE 0.0
MCE 5.0

NORTHERN VIEW SMW GUSTOV 3Z

DMM RUMBLE 11E

DMM MISS ESSENCE 46A

CROWFOOT VENTURE 1698L

CHAPMAN G PRIDE 608S

CHAPMAN PRIDE 416P

REMITALL H RACHIS 21R

ISLA BANK NEONIA 27S

S A V HERITAGE 6295

DMM MISS ESSENCE 61W

BASIN MAX 104J

GLADWALL SARITA 8255

VDAR DATABANK 1061

BARB WALL G PRIDE 310

DAM'S PROD

BW	WW	205	WR	YR	AOD	NR
92	720	721	113	109	13	103

Gustov cow bull from a proven cow who had another calf in 2020 at the age of 14. She is the type of cow where the only thing that will wear out on her will be her teeth. The 1698L daughters have a lot of longevity and all that longevity encompasses. She has a NR 12/103. Good numbers validating Lot 66. If you make your own replacements, buy sons of these old gals.

LOT

67

CHAPMAN GUSTOV 9780

Tattoo: SWC 9780G DOB: April 18 2019 REG#: 2185392

SPRING '21

BW 3.4
WW 62
YW 105
M 21
CE -1.0
MCE 4.0

NORTHERN VIEW SMW GUSTOV 3Z

DMM RUMBLE 11E

DMM MISS ESSENCE 46A

CROWFOOT 2711M

CHAPMAN ROSEWALL 9015W

CROWFOOT ROSEWALL 5770R

REMITALL H RACHIS 21R

ISLA BANK NEONIA 27S

S A V HERITAGE 6295

DMM MISS ESSENCE 61W

LEACHMAN RIGHT TIME

GLADWALL B CHLOE 7135

O C C LEGACY 839L

CROWFOOT ROSEWALL 1666L

DAM'S PROD

BW	WW	205	WR	YR	AOD	NR
88	700	669	105	104	10	101

Lot 67 is basically a brother in blood to Lot 65. His dam holds a 367d CI and this is her 2nd sale qualified bull with 3 daughters retained. She has a NR 8/101. Her dam had a NR 11/98. Lots of cow power with all the merit of the Miss Essence cow family behind the sire of Lot 67, combined with a Right Time x Legacy bred dam. The Gustov cattle have good feet with added heel.

SIRE **K** CHAPMAN Equation 4547B

Tattoo: SWC 4547B DOB: April 18 2014 REG#: 1830809



CROWFOOT EQUATION 5793R

SPRING '21

BW 0.7
WW 43
YW 78
M 30
CE 7.0
MCE 3.0

O C C LEGACY 839L
CROWFOOT EQUATION 5793R
CROWFOOT FORKS 755K

O C C MOONSHINE 740M
CROWFOOT REV ROSE 5900R
CROWFOOT CH REV ROSE 1627L

O C C ECHOLON 857E
O C C DIXIE ERICA 960E
TOMWALL PIED PIPER 413
GLADWALL B REV ERICA 7289

O C C JUST RIGHT 619J
O C C DIXIE ERICA 816B
C&D 455 ROCKETT OHF
C H REV ROSE 9297

Progeny Birth Weight Averages: Male 85 lbs | Female 76 lbs

We retained five bulls out of the 2014 calf crop. Those five were all out of what we considered paternally prepotent dams that were proven and donor worthy. 4547B was one of those five and out of the 5900R donor who earned a NR 12/103 who also produced the Memento 0511X herd sire. Interesting that 4547 is a naturally sired son of Crowfoot Equation 5793R who ran here with 50 cows as a 9-year-old bull. The first Crowfoot Equation daughters are now entering their 14th year and easily make an argument to going back to using the old bull, or his downline.



LOT 68

LOT 68

CHAPMAN EQUATE 9919

Tattoo: SWC 9919G DOB: May 21 2019 REG#: 2185443

SPRING '21

BW 1.3
WW 41
YW 74
M 30
CE 5.8
MCE 2.0

CROWFOOT EQUATION 5793R
CHAPMAN EQUATION 4547B
CROWFOOT REV ROSE 5900R

CHAPMAN MEMENTO 3589A
CHAPMAN G EILEEN 7158E
CHAPMAN G EILEEN 2047Z

O C C LEGACY 839L
CROWFOOT FORKS 755K
O C C MOONSHINE 740M
CROWFOOT CH REV ROSE 1627L

CHAPMAN MEMENTO 0505X
CHAPMAN KAWICH LADY 8045U
CROWFOOT EQUATION 5793R
CROWFOOT G EILEEN 4784P

DAM'S PROD

BW	WW	205	WR	YR	AOD	NR
91	660	802	126	119	2	126

Lead off Equate son who will find some friends sale day. Crowfoot pedigree that combines some of their best. The hard data says Lot 68 has a lot of in-house cow power behind him. Check out these nursing ratios: 8065U 10/110 Elite, 9156 12/104 Elite, 434P 13/105, 5752R 11/103, 4784P 12/102 and 5900R 12/103. His young dam has a 337d CI and is bred back early A.I.



LOT 69

LOT 69

CHAPMAN EQUATE 9907

Tattoo: SWC 9907G DOB: May 17 2019 REG#: 2185437

SPRING '21

BW 0.8
WW 37
YW 65
M 28
CE 7.3
MCE 4.8

CROWFOOT EQUATION 5793R
CHAPMAN EQUATION 4547B
CROWFOOT REV ROSE 5900R

XO CROWFOOT EQU 268Z
CHAPMAN G PRIDE 7086E
CHAPMAN G PRIDE 4138B

O C C LEGACY 839L
CROWFOOT FORKS 755K
O C C MOONSHINE 740M
CROWFOOT CH REV ROSE 1627L

CROWFOOT EQUATION 5793R
XO CROWFOOT DIXIE ERICA 828U
CHAPMAN MEMENTO 0505X
CHAPMAN G PRIDE 8013U

DAM'S PROD

BW	WW	205	WR	YR	AOD	NR
80	610	735	115	111	2	115

Calving ease prospect. His young dam holds a 349d CI and bred back early A.I. Maternal granddam produced a top herd bull in 2015 to Circle G and F-R. She has a NR 9/103 and entering her 13th year. The pedigree behind Lot 69 traces over and over to three Angus Legends including Dixie Erica of CH 1019, DHD Traveler 6807 and ultimately PBC 707 1M F0203.

LOT	70	CHAPMAN EQUATE 9824					
		Tattoo: SWC 9824G DOB: April 26 2019 REG#: 2185423					
SPRING '21		CROWFOOT EQUATION 5793R CHAPMAN EQUATION 4547B CROWFOOT REV ROSE 5900R			O C C LEGACY 839L CROWFOOT FORKS 755K O C C MOONSHINE 740M CROWFOOT CH REV ROSE 1627L		
BW	18						
WW	42						
YW	77						
M	29	CHAPMAN MEMENTO 0513X CHAPMAN PRIDE 7051E CHAPMAN K PRIDE 8067U			SINCLAIR MEMENTO 8RL5 CROWFOOT LOVEMERE PET 5791R CROWFOOT EQUATION 5793R CHAPMAN PRIDE 4409		
CE	5.0						
MCE	4.3						
		DAM'S PROD					
BW	WW	205	WR	YR	AOD	NR	
78	590	657	103	102	2	103	

Calving ease describes Lot 70. His dam holds a 349d CI. After raising Lot 70 on her 1st go, she rebred early to Steadfast in 2019 and is bred back early again in 2020 to her A.I. service. There is no mystery in history with her as she originates from the productive K Prides, where the 4 dams behind her have earned the following nursing ratios: 10/109 Elite, 8/105, 11/108 and 10/106.

LOT	71	CHAPMAN EQUATE 9776					
		Tattoo: SWC 9776G DOB: April 18 2019 REG#: 2185421					
SPRING '21		CROWFOOT EQUATION 5793R CHAPMAN EQUATION 4547B CROWFOOT REV ROSE 5900R				O C C LEGACY 839L CROWFOOT FORKS 755K O C C MOONSHINE 740M CROWFOOT CH REV ROSE 1627L	
BW	10						
WW	36						
YW	61						
M	27	CHAPMAN MEMENTO 0505X CHAPMAN PRIDE 7100E CHAPMAN G PRIDE 8013U				SINCLAIR MEMENTO 8RL5 CROWFOOT REV ERICA 5752R CROWFOOT MACHO 4549P CHAPMAN G PRIDE 672S	
CE	7.0						
MCE	5.8					DAM'S PROD	
BW	WW	205	WR	YR	AOD	NR	
83	660	705	110	108	2	110	

Calving ease prospect. Solid data set from birth to weaning. His young dam is off to a good start. She holds a 372d CI, calved early in 2020 and bred back A.I. Lot 71's sire has been used on heifers for several years and was a very efficient breeder, servicing 50 yearling heifers in 2020 as a 6-year-old bull. Higher fertility in these Equate sons. Same cow family as Lot 69.

SIRE **L** CHAPMAN *Coalition* 4557B

Tattoo: SWC 4557B DOB: April 17 2014 REG#: 1892847



SITZ ALLIANCE 6595

SPRING '21

BW 24
WW 41
YW 67
M 28
CE 3.0
MCE 8.0

SITZ TRAVELER 8180
SITZ ALLIANCE 6595
SITZ BARBARAMERE JET 2698

O C C JOKER 620J
CROWFOOT LADY ERICA 3785N
PAT LADY ERICA 8984

G D A R TRAVELER 71
SITZ EVERELDA ENTENSE 1137
3 BAR SPIKE 1766
SITZ BARAMERE JET 155

O C C EMBLAZON 854E
O C C JUANADA 709V
N BAR IMPACT U1253
PAT PIED PIPER 921

Progeny Birth Weight Averages: Male 86 lbs | 79 lbs

Coalition is one of the best kept secrets here and has created a proof of production the old school way; having ran in multi-sire groups his first two years. Coalition has a herd bull look and possesses as good a foot shape as I've seen on a 7-year-old bull. He looks a lot like his Pathfinder sire, Sitz Alliance 6595 at that age, and carries the maternal legacy of two generations of Lady Erica donors. His daughters have great udder structure – maybe our best.



CROWFOOT LADY ERICA 3785N



LOT 72

LOT 72

CHAPMAN COALITION 9778

Tattoo: SWC 9778G DOB: April 18 2019 REG#: 2185377

SPRING '21

BW 3.6
WW 57
YW 93
M 23
CE -1.0
MCE 3.0

SITZ ALLIANCE 6595
CHAPMAN COALITION 4557B
CROWFOOT LADY ERICA 3785N

SINCLAIR RITO 9R7
CHAPMAN ROSE 5056C
CHAPMAN ROSE 8057U

SITZ TRAVELER 8180
SITZ BARBARAMERE JET 2698
O C C JOKER 620J
PAT LADY ERICA 8984

RITO REVOLVE OR5
SINCLAIR K BTY 6PV5 25F3
DDA EMBLAZON 27C
CHAPMAN ROSE 4405

BW	WW	205	WR	YR	AOD	DAM'S PROD NR
96	685	671	105	104	4	109

Proven pedigree that combines the trait leading performance of Rito 9R7 with the low input maternal efficiency of OCC Joker and DDA 27C. Dam is a bigger frame cow and even while dealing with a jaw abscess, she holds a 369d CI and a NR 3/109. She is also the granddam of the good Lot 13 bull. There are four really productive cow families in Lot 72's immediate pedigree.

LOT 73

CHAPMAN COALITION 9920

Tattoo: SWC 9920G DOB: May 23 2019 REG#: 2185394

SPRING '21

BW 1.0
WW 41
YW 70
M 26
CE 4.0
MCE 5.0

SITZ ALLIANCE 6595
CHAPMAN COALITION 4557B
CROWFOOT LADY ERICA 3785N

SINCLAIR BROKER 3RC33
CHAPMAN EOLA 5073C
CHAPMAN EOLA 601S

SITZ TRAVELER 8180
SITZ BARBARAMERE JET 2698
O C C JOKER 620J
PAT LADY ERICA 8984

SINCLAIR ENTREPRENEUR 8R101
SINCLAIR LADY IDA 8XV12 C52
O C C LEGACY 839L
GLADWALL EOLA 8125

DAM'S PROD

BW	WW	205	WR	YR	AOD	NR
85	585	667	104	103	4	98

Calving ease prospect that will get noticed sale day. The Coalition daughters are maybe my favorite. It is not by coincidence though as their sire is the product of mating a Pathfinder sire to a 2nd generation donor known for udder quality, fertility and longevity. Lot 73's dam holds a 387d CI. Her dam and granddam have a NR 9/109 (Elite) and 10/103. Good bull!!

LOT 74

CHAPMAN COALITION 9829

Tattoo: SWC 9829G DOB: April 28 2019 REG#: 2185365

SPRING '21

BW 0.6
WW 42
YW 72
M 26
CE
MCE

SITZ ALLIANCE 6595
CHAPMAN COALITION 4557B
CROWFOOT LADY ERICA 3785N

BUFORD TRANSFORMER Y353
ZWT PRIMROSE 4723
ZWT PRIMROSE 2286

SITZ TRAVELER 8180
SITZ BARBARAMERE JET 2698
O C C JOKER 620J
PAT LADY ERICA 8984

S A V FINAL ANSWER 0035
S A V ELBA 4436
D H D TRAVELER 6807
N BAR PRIMROSE Y3051 OHF

DAM'S PROD

BW	WW	205	WR	YR	AOD	NR
82	630	643	101	101	5	103

Another calving ease Coalition jacked up in maternal goodness. His pedigree combines several Pathfinders (animals identified for excelling in production) up front in his pedigree, including Alliance 6595, N Bar Primrose Y3051 and SAV Final Answer. Combine those with two consecutive Lady Erica donors with 73 calves combined. The dam of Lot 74 has a 374d CI.

LOT 75

CHAPMAN COALITION 9812

Tattoo: SWC 9812G DOB: April 24 2019 REG#: 2185382

SPRING '21

BW 2.4
WW 46
YW 76
M 22
CE 2.0
MCE 4.0

SITZ ALLIANCE 6595
CHAPMAN COALITION 4557B
CROWFOOT LADY ERICA 3785N

SINCLAIR RITO 9R7
CHAPMAN ELISEVER 5012C
XO CROWFOOT ELISEVER 1416Y

SITZ TRAVELER 8180
SITZ BARBARAMERE JET 2698
O C C JOKER 620J
PAT LADY ERICA 8984

RITO REVOLVE OR5
SINCLAIR K BTY 6PV5 25F3
FUNKS BALLARD 952 GFAR
XO CROWFOOT ELISEVA 950W

DAM'S PROD

BW	WW	205	WR	YR	AOD	NR
92	615	619	97	98	4	104

Cow bull that I would utilize for making replacement females and getting the cows bred up. The sire of Lot 72-75 has excellent feet as a 7-year-old bull. His sons should emulate that trait – a trait that should disqualify a lot of breeding cattle that will sell this spring (but it wont). Lot 75's dam has a 372d CI with 2 daughters retained. Her Shoshone-sired dam has a NR 7/101.



SINCLAIR RITO 9R7

SIRE

M

WHL Stratton 1531C

Tattoo: WHL 1531C DOB: March 28 2015 REG#: 1166218



SPRING '21

BW -0.6
WW 71
YW 114
M 17
CE 14.6
MCE 4.9

SVF STEEL FORCE S701
FBF1 COMBUSTIBLE
LAZY H BURN BABY BURNR34

BC EAGLE EYE 110-7
THUNDER CREEK RUBY 25Z
THUNDER CREEK RUBY 52T

CNS DREAM ON L186
SVF SHEZA BEAUTY L901
WLE BS BENCHMARK
TRIPLE C BURN IT UP N34L

B C LOOKOUT 7024
B C PURE PRIDE ERICA D 11
STEVENSON MONEYMAKER R185
THUNDER CREEK RUBY 30P

Stratton was acquired out of the 2016 Windy Hills Bull Sale as the 2nd high seller. Smooth shouldered and deep sided, he is ½ Angus ½ Simmental and posted a BW 76 lbs WW 808 lbs and YW 1325 lbs. He was first used in multi sire pastures for two years on sale cows. The 3rd year he was exposed to an entire age group of Registered Angus cows to create our own design of embryo recip. His calves are born small and wean heavy, and his daughters look great. His sons in this sale offering are hard to fault. Forage-Developed SimAngus genetics.



LOT **76**

CHAPMAN DUECE 9826

Tattoo: SWC 9826G DOB: April 27 2019 REG#: 75% AN 25% SM

SPRING '21

BW -
WW -
YW -
M -
CE -
MCE -

FBF1 COMBUSTIBLE
WHL STRATTON 1531C
THUNDER CREEK RUBY 25Z

CHAPMAN MEMENTO 0505X
CHAPMAN LURA 6067D
CHAPMAN LURA 8064U

SVF STEEL FORCE S701
LAZY H BURN BABY BURNR34
BC EAGLE EYE 110-7
THUNDER CREEK RUBY 52T

SINCLAIR MEMENTO 8RL5
CROWFOOT REV ERICA 5752R
CROWFOOT EQUATION 5793R
CHAPMAN LURA 446P

DAM'S PROD

BW	WW	205	WR	YR	AOD	NR
95	870	901	141	130	3	136

Lot 76 stems from the herd bull producing Lura cow family. His dam is a perfect uddered, fertile, 1240 lb cow that obviously weans a large percentage of her own body weight while holding a 355d CI. Her mother has also hit the mark achieving Elite status with a NR 10/106. These good AN x SM hybrids look like Angus bulls, and if Lot 76 was registered he wouldn't be for sale.



LOT **77**

CHAPMAN DUECE 9890

Tattoo: SWC 9890G DOB: May 11 2019 REG#: 75% AN 25% SM

SPRING '21

BW -
WW -
YW -
M -
CE -
MCE -

FBF1 COMBUSTIBLE
WHL STRATTON 1531C
THUNDER CREEK RUBY 25Z

MC CUMBER 8R101 RITO 161
CHAPMAN G PRIDE 6160D
CHAPMAN FAHRENESS 916W

SVF STEEL FORCE S701
LAZY H BURN BABY BURNR34
BC EAGLE EYE 110-7
THUNDER CREEK RUBY 52T

SINCLAIR ENTREPRENEUR 8R101
B PRIDE 463 OF MC CUMBER
CROWFOOT MACHO 4549P
CHAPMAN FAHRENESS 678S

DAM'S PROD

BW	WW	205	WR	YR	AOD	NR
90	650	723	113	110	3	113

You'll like these ¾ Angus ¼ Simmental bulls. They look just like Angus bulls with a little more horsepower. They are all out of top cows. Our goal is to make our own embryo recip so we bred an entire age group of registered Angus cows to ½ bloods. Lot 77 is from a good young cow, Along with a NR 2/113, she holds a 353d CI and rebred early A.I. to U2 Coalition 206C.

LOT	78	CHAPMAN DUECE 9842				
		Tattoo: SWC 9842G DOB: April 29 2019 REG#: 75% AN 25% SM				
SPRING '21		FBF1 COMBUSTIBLE WHL STRATTON 1531C THUNDER CREEK RUBY 25Z		SVF STEEL FORCE S701 LAZY H BURN BABY BURNR34 BC EAGLE EYE 110-7 THUNDER CREEK RUBY 52T		
BW	-	O C C LEGACY 839L CHAPMAN LADY ERICA 6011 PAT LADY ERICA 8984		O C C ECHELON 857E		
WW	-			O C C DIXIE ERICA 960E		
YW	-			N BAR IMPACT U1253		
M	-			PAT PIED PIPER 921		
CE	-					
MCE	-	DAM'S PROD				
BW	WW	205	WR	YR	AOD	NR
81	750	788	123	117	3	105

Calving ease hybrid bull. When I mentioned Stratton 1531C was exposed to an entire age group of registered Angus cows I wasn't kidding. The dam of Lot 78 is an embryo daughter of Lady Erica 8984 and OCC Legacy 839L. She is the right size of cow, has a 351d CI and a NR 2/105. She rebred early to her A.I. service after weaning a top Coleman Forte daughter.



LOT	79	CHAPMAN DUECE 9854				
		Tattoo: SWC 9854G DOB: May 01 2019 REG#: 75% AN 25% SM				
SPRING '21		FBF1 COMBUSTIBLE		SVF STEEL FORCE S701		
BW	-	WHL STRATTON 1531C		LAZY H BURN BABY BURNR34		
WW	-	THUNDER CREEK RUBY 25Z		BC EAGLE EYE 110-7		
YW	-			THUNDER CREEK RUBY 52T		
M	-	CHAPMAN MEMENTO 0505X		SINCLAIR MEMENTO 8RL5		
CE	-	CHAPMAN PRIDE 6095D		CROWFOOT REV ERICA 5752R		
MCE	-	CHAPMAN PRIDE 775T		CHAPMAN ALLIANCE 259M		
				KLUZAK PRIDE 25G		
		DAM'S PROD				
BW	WW	205	WR	YR	AOD	NR
85	670	711	111	108	3	111

Calving ease hybrid bull. The Stratton calves all came unassisted and smaller at birth suggesting early gestation. The sister mates to these ¾ Angus ¼ Simmental bulls all look the part. Lot 79 stems from the Pride cow family known for its productivity and ability to put bulls in the sale. Same cow family as Lot 16. His dam has a NR 2/111 with a 347d CI and rebred A.I. for 2021.



LOT	80	CHAPMAN DUECE 9922				
		Tattoo: SWC 9922G DOB: May 25 2019 REG#: 75% AN 25% SM				
SPRING '21		FBF1 COMBUSTIBLE WHL STRATTON 1531C THUNDER CREEK RUBY 25Z		SVF STEEL FORCE S701 LAZY H BURN BABY BURNR34 BC EAGLE EYE 110-7 THUNDER CREEK RUBY 52T		
BW	-					
WW	-					
YW	-					
M	-	CHAPMAN MEMENTO 0511X		SINCLAIR MEMENTO 8RL5		
CE	-	CHAPMAN CHLOE 611AD		CROWFOOT REV ROSE 5900R		
MCE	-	CHAPMAN CHLOE 1054Y		SINCLAIR IN TIME 9RT10		
				CHAPMAN CHLOE 8017U		
		DAM'S PROD				
BW	WW	205	WR	YR	AOD	NR
81	700	828	130	122	3	116

Calving ease hybrid bull with a big birth to weaning spread. His dam would also have weaned a large percentage of her own body weight; and is off to a great start with a NR 2/116 and a 392d CI. She stems from the Chloe cow family ensuring fertility, udder quality and longevity. She weaned a good Coleman Forte bull calf this past fall and is rebred A.I.



LOT	81	CHAPMAN DUECE 9803				
		Tattoo: SWC 9803G DOB: April 23 2019 REG#: 75% AN 25% SM				
SPRING '21						
BW	-	FBF1 COMBUSTIBLE		SVF STEEL FORCE S701		
WW	-	WHL STRATTON 1531C		LAZY H BURN BABY BURNR34		
YW	-	THUNDER CREEK RUBY 25Z		BC EAGLE EYE 110-7		
M	-	SINCLAIR RITO 9R7		THUNDER CREEK RUBY 52T		
CE	-	CHAPMAN LADY ERICA 6004		RITO REVOLVE OR5		
MCE	-	CROWFOOT LADY ERICA 3785N		SINCLAIR K BTY 6PV5 25F3		
				O C C JOKER 620J		
				PAT LADY ERICA 8984		
				DAM'S PROD		
BW	WW	205	WR	YR	AOD	NR
92	735	755	118	113	3	109

Hybrid cow bull with the Angus look. His dam is the product of our embryo program combining the performance sire Rito 9R7 with the Lady Erica 3785N donor. She is a direct daughter of the Lady Erica 8984 donor who is behind Lot 78. The 8984 cow produced natural calves until the age of 18. Lot 81's dam holds a 361d CI and a NR 2/109. She is also rebred A.I. for 2021.



LOT	82	CHAPMAN DUECE 9779				
		Tattoo: SWC 9779G DOB: April 18 2019 REG#: 75% AN 25% SM				
SPRING '21						
BW	-	FBF1 COMBUSTIBLE		SVF STEEL FORCE S701		
WW	-	WHL STRATTON 1531C		LAZY H BURN BABY BURNR34		
YW	-	THUNDER CREEK RUBY 25Z		BC EAGLE EYE 110-7		
M	-	RICHMOND BANDIT SRD 67B		THUNDER CREEK RUBY 52T		
CE	-	CHAPMAN G PRIDE 6123D		COLE CREEK GOLDMERE 581		
MCE	-	CHAPMAN G PRIDE 1049Y		CROWFOOT KELTON 2015Z		
				CROWFOOT JOKER 6172S		
				CHAPMAN PRIDE 3309		
		DAM'S PROD				
BW	WW	205	WR	YR	AOD	NR
81	755	759	119	114	3	108

Calving ease hybrid bull that follows suit in low birth – accelerated gain – Angus phenotype – responsible frame – forage developed. His dam has a NR 2/113 and holds a 365d CI while being bred back A.I. The combination of Joker and Bandit ensure added doability. All of these hybrid bulls are docile, clean in their lines and have the Angus look.

ANGUS X SIMMENTAL

LOT	83	CHAPMAN MAXWELL 9761				
		Tattoo: SWC 9761G DOB: April 10 2019 REG#: 50% AN 50% SM				
SPRING '21						
BW	-	REGISTERED SIMMENTAL				
WW	-					
YW	-					
M	-	CHAPMAN MEMENTO 0505X				SINCLAIR MEMENTO 8RL5
CE	-	CROWFOOT LOVEMERE 3188A				CROWFOOT REV ERICA 5752R
MCE	-	CROWFOOT FORKS 604K				D V PRIDES COMMODORE
						BARB WALL LOVEMERE R 830
						DAM'S PROD
BW	WW	205	WR	YR	AOD	NR
93	765	708	111	108	6	107

Lot 83 is ½ Angus ½ Simmental and wasn't a planned mating, but rather the product of the neighbors registered Simmental bull climbing in with our registered Angus cows the day I was turning bulls out. Good thing they aren't afraid to spend money on top bulls. Big hiped, extra hair and bone. Dam has a NR 4/107.

LOT	84	CHAPMAN MAXWELL 9753				
		Tattoo: SWC 9753G DOB: April 05 2019 REG#: 50% AN 50% SM				
SPRING '21						
BW	-	REGISTERED SIMMENTAL				
WW	-					
YW	-					
M	-					
CE	-					
MCE	-					
		CROWFOOT JOKER 6172S		O C C JOKER 620J		
		CHAPMAN BELLE NELLIE 1035Y		CFCC 1801L		
		CROWFOOT BELLE NELLIE 4716P		O C C LEGACY 839L		
				CROWFOOT BELLE L NELLIE 2646M		
DAM'S PROD						
BW	WW	205	WR	YR	ADD	NR
93	790	717	112	109	8	106

Lot 84 is also a ½ Angus ½ Simmental; and like Lot 83 he isn't the product of a planned mating but from the same sire. Big hiped, extra hair and bone with a bit of chrome. His dam has a NR 6/106 and like the dam of Lot 83, was one of the early cycling cows. Not many if any forage-developed ½ bloods available – more bull for more years.

FOOT SCORE GUIDELINES

Foot Angle (5 is ideal)



1

Extremely straight pasterns.
Very short toe. Unsound.



2

Straight front and rear pasterns.
Marginally unsound.



3

Moderately straight front
and rear pasterns.



4

Slightly straight front
and rear pasterns.



5

Ideal. Approximately 45-degree angle
at pastern joint. Appropriate length of
toe and depth of heel.



6

Slightly shallow heel and long toe.



7

Moderately shallow heel and long toe.
Somewhat weak pasterns.



8

Shallow heel and long toe.
Marginally unsound.



9

Extremely shallow heel and long toe.
Extremely weak pasterns. Unsound.

Claw Set (5 is ideal)



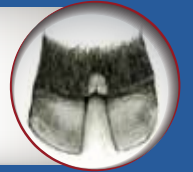
1

Extremely weak, open,
divergent claw set. Unsound.



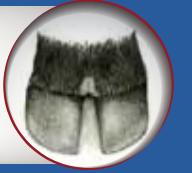
2

Open, divergent claw set.
Marginally unsound.



3

Moderately open/divergent
claw set.



4

Slightly open/divergent
claw set.



5

Ideal. Symmetrical claws, with
appropriate space between claws.



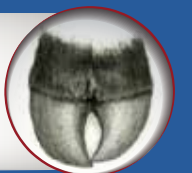
6

Slight tendency for claws to curl.
One claw may be slightly larger
than the other.



7

Tendency for claws to curl, with one
claw larger than the other.



8

Moderate scissor claw and/or screw
claw. Curling of one or both claws. Near
crossing of claws. Marginally unsound.



9

Extreme scissor claw and/or screw claw.
Pronounced curling of one or both claws.
Crossing of claws. Unsound

Resident HERD SIREs



BC ROBUST 0807

BC SURVEYOR 680D X BC PURE PRIDE 327-8



SITZ PAYWEIGHT 749E

BASIN PAYWEIGHT 1682 X CONNEALY THUNDER



Mc CUMBER 307 FORTUNATE 7141

McCUMBER FORTUNATE 307 X OCC TREMENDOUS 619T



Mc CUMBER TITANIUM 5197

McCUMBER TITANIUM 3127 X SITZ RAINMAKER 6536



Mc CUMBER STEADFAST 809

Mc CUMBER STEADFAST 635 X SAV 8180 TRAVELER 004



CHAPMAN ROBUST 8568

BC ROBUST 0807 X Mc CUMBER 8R101 RITO 161

A.I. SIREs



CROWFOOT JOKER 6172S

OCC JOKER 620J X TOMWALL GDAR ROYCE 964



SCHIEFELBEIN ATTRACTIVE 4565

JMB TRACTION 292 X SAV FINAL ANSWER 0035



CHAPMAN RECOURSE 8613

SAV RESOURCE 1441 X CROWFOOT EQUATION 5793R



CHAPMAN EQUATION 4547B

CROWFOOT EQUATION 5793R X OCC MOONSHINE 740M



CHAPMAN MEMENTO 7542E

CHAPMAN MEMENTO 0505X X SBR WATERTON 6148S



BAR-E-L POWER 326

OCC ECHELON 857E x HF G-MAN 29B



SIRE: SITZ ALLIANCE 6595



DAM: OCC JOKER 620J

CHAPMAN COALITION 4557B

SITZ ALLIANCE 6595 X OCC JOKER 620J



SAV RENEW 8132

SAV RENOWN 3439 X CONNEALY CAVALRY 1149



CONNEALY EMERALD

CONNEALY CONFIDENCE PLUS X CONNEALY ARMORY



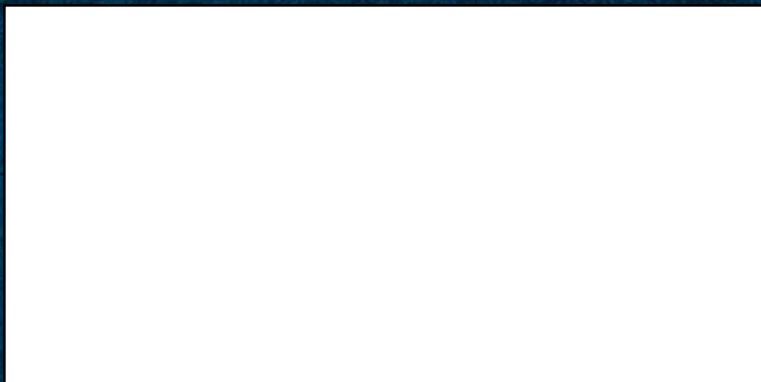
U-2 COALITION 206C

HF SYNDICATE 213Z X YOUNG DALE EXCLUSIVE 25X



BOX 728
STETTLER, ALBERTA
T0C 2L0

R
P
G
/
P
R
G



80 FORAGE DEVELOPED 2 YEAR OLD BULL SALE

FEBRUARY 18, 2021 - STETTLER, AB - 2PM MST

WWW.CHAPMANCATTLE.COM

PRINTED IN CANADA / FOR FREE DISTRIBUTION

In order to save trees, please email us if you do not wish to receive a catalog or are no longer in the cattle business. Thank you.

